

Product datasheet for **TA355206**

Syndecan 1 (SDC1) Chimeric Monoclonal Antibody

Product data:

Product Type:	Primary Antibodies
Applications:	FC
Recommended Dilution:	Flow Cyt 1:100
Reactivity:	Human
Host:	Chimeric
Isotype:	IgG4
Clonality:	Monoclonal
Formulation:	Lyophilized from sterile PBS, pH 7.4. Normally 5 % - 8 % trehalose is added as protectants before lyophilization. Preservative: 0.1% Procline 300
Reconstitution Method:	Reconstitute with deionized water
Purification:	Purified from cell culture supernatant by affinity chromatography
Conjugation:	Unconjugated
Storage:	Store at -20°C (Avoid repeated freezing and thawing)
Stability:	12 months from date of dispatch
Gene Name:	syndecan 1
Database Link:	Entrez Gene 6382 Human P18827
Synonyms:	CD138; SDC; SYND1; syndecan
Note:	Common Name: BT-062, BT062, nBT062-DM4



[View online »](#)

Product images:

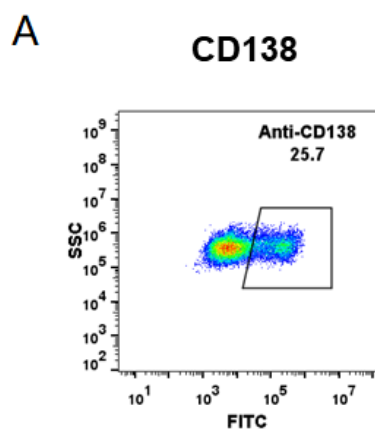


Figure 1. HEK293 cell line transfected with irrelevant protein (B) and human CD138 (A) were surface stained with anti-CD138 neutralizing antibody 1 µg/ml (indatuximab ravtansine) followed by Alexa 488-conjugated anti-human IgG secondary antibody.