

## Product datasheet for **TA355201**

### PD-L1 (CD274) Humanized Monoclonal Antibody

#### Product data:

Product Type:	Primary Antibodies
Applications:	ELISA, FC
Recommended Dilution:	ELISA 1:5000-10000
Reactivity:	Human
Host:	Humanized
Isotype:	IgG1
Clonality:	Monoclonal
Formulation:	Lyophilized from sterile PBS, pH 7.4. Normally 5 % - 8 % trehalose is added as protectants before lyophilization. Preservative: 0.1% Procline 300
Reconstitution Method:	Reconstitute with deionized water
Purification:	Purified from cell culture supernatant by affinity chromatography
Conjugation:	Unconjugated
Storage:	Store at -20°C (Avoid repeated freezing and thawing)
Stability:	12 months from date of dispatch
Gene Name:	CD274 molecule
Database Link:	<a href="#">Entrez Gene 29126 Human Q9NZQ7</a>
Synonyms:	B7-H; B7-H1; B7H1; MGC142294; MGC142296; PD-L1; PDCD1L1; PDCD1LG1; PDL1
Note:	<b>Common Name:</b> MPDL3280A,RG7446



[View online »](#)

Product images:

Human PDL1, mFc-His Tagged protein ELISA

0.2 µg of Human PDL1, mFc-His Tagged protein per well

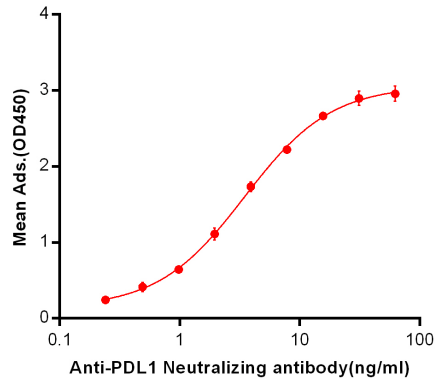


Figure 1. ELISA plate pre-coated by 2 µg/ml (100 µl/well) Human PDL1, mFc-His tagged protein ([TP723946]) can bind Anti-PDL1 Neutralizing antibody in a linear range of 0.24-7.81 ng/ml.

A

PDL1

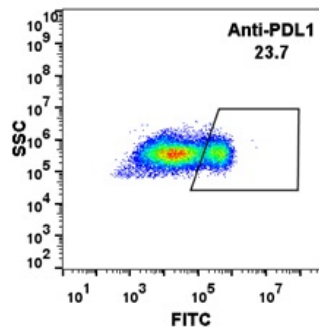


Figure 2. HEK293 cell line transfected with irrelevant protein (B) and human PDL1(A) were surface stained with anti-PDL1 neutralizing antibody 1µg/ml (atezolizumab) followed by Alexa 488-conjugated anti-human IgG secondary antibody.