

Product datasheet for **TA355198**

PD1 (PDCD1) Humanized Monoclonal Antibody

Product data:

Product Type:	Primary Antibodies
Applications:	ELISA, FC
Recommended Dilution:	ELISA 1:5000-10000
Reactivity:	Human
Host:	Humanized
Isotype:	IgG4
Clonality:	Monoclonal
Formulation:	50% Glycerol; PBS, pH 7.4; 0.1% BSA Preservative: 0.1% Procline 300
Concentration:	Lot specific
Purification:	Purified from cell culture supernatant by affinity chromatography
Conjugation:	Unconjugated
Storage:	Store at -20°C (Avoid repeated freezing and thawing)
Stability:	12 months from date of dispatch
Gene Name:	programmed cell death 1
Database Link:	Entrez Gene 5133 Human Q15116
Synonyms:	CD279; hPD-1; hPD-I; PD1; SLEB2
Note:	Common Name: MK-3475



[View online »](#)

Product images:

Human PD1, mFc-His Tagged protein ELISA

0.2 µg of Human PD1, mFc-His Tagged protein per well

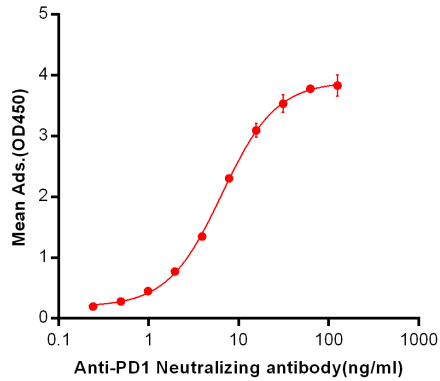


Figure 1. ELISA plate pre-coated by 2 µg/ml (100 µl/well) Human PD1, mFc-His tagged protein (TP723948) can bind Anti-PD-1 Neutralizing antibody in a linear range of 0.24-6.49 ng/ml.

A

PD1

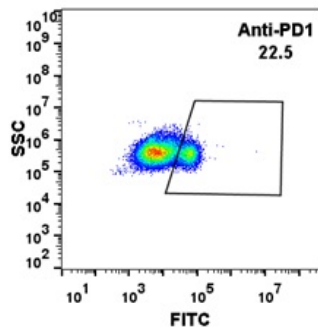


Figure 2. HEK293 cell line transfected with irrelevant protein (B) and human PD1(A) were surface stained with anti-PD1 neutralizing antibody 1µg/ml (pembrolizumab) followed by Alexa 488-conjugated anti-human IgG secondary antibody.