

## Product datasheet for **TA355186**

### IL3RA Rabbit Monoclonal Antibody [Clone ID: DM33]

#### Product data:

Product Type:	Primary Antibodies
Clone Name:	DM33
Applications:	ELISA, FC
Recommended Dilution:	ELISA 1/5000-10000;Flow Cyt 1/100
Reactivity:	Human
Host:	Rabbit
Isotype:	IgG
Clonality:	Monoclonal
Immunogen:	Recombinant human CD123(Thr19-Arg305) (TP723926) produced by using human HEK293 cells
Formulation:	Lyophilized from sterile PBS, pH 7.4. Normally 5 % - 8 % trehalose is added as protectants before lyophilization. Preservative: 0.1% Procline 300
Reconstitution Method:	Reconstitute with deionized water
Purification:	Purified from cell culture supernatant by affinity chromatography
Conjugation:	Unconjugated
Storage:	Store at -20°C for 12 months (Avoid repeated freezing and thawing)
Stability:	12 months from date of despatch
Predicted Protein Size:	39kDa
Gene Name:	interleukin 3 receptor subunit alpha
Database Link:	<a href="#">Entrez Gene 3563 Human P26951</a>
Background:	Interleukin 3 receptor alpha (low affinity) (IL3RA), also known as CD123 (Cluster of Differentiation 123) is a 70-kD glycoprotein member of the hematopoietin receptor superfamily. This protein associates with a beta subunit common to the receptors for IL- $\beta$
Synonyms:	CD123; hIL-3Ra; IL-3R-alpha; IL3R; IL3RAY; IL3RX; IL3RY; MGC34174



[View online »](#)

Product images:

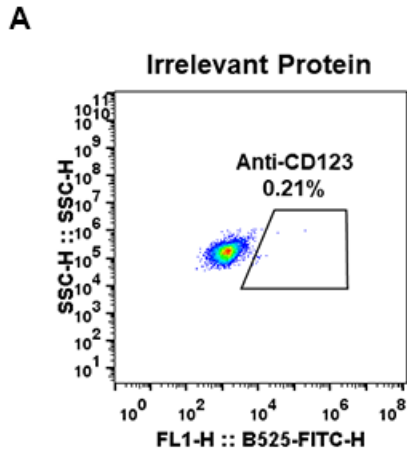


Figure 1. Expi 293 cell line transfected with irrelevant protein (left) and human CD123(right) were surface stained with Rabbit anti-CD123 monoclonal antibody 1µg/ml (clone: DM33) followed by Alexa 488-conjugated anti-rabbit IgG secondary antibody.

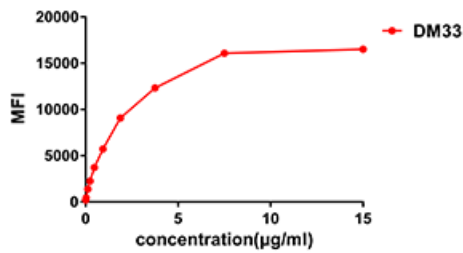


Figure 2. Flow cytometry data of serially titrated Rabbit anti-CD123 monoclonal antibody (clone: DM33) on THP-1 cells. The Y-axis represents the mean fluorescence intensity (MFI) while the X-axis represents the concentration of IgG used.

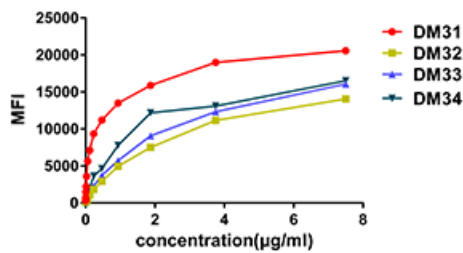


Figure 3. Affinity ranking of different Rabbit anti-CD123 mAb clones by titration of different concentration onto THP-1 cells. The Y-axis represents the mean fluorescence intensity (MFI) while the X-axis represents the concentration of IgG used.

