

Product datasheet for **TA355184**

BCMA (TNFRSF17) Rabbit Monoclonal Antibody [Clone ID: DM16]

Product data:

Product Type:	Primary Antibodies
Clone Name:	DM16
Applications:	ELISA, FC, IF, IP
Recommended Dilution:	Flow Cyt 1/100; IP 1/30
Reactivity:	Human
Host:	Rabbit
Isotype:	IgG
Clonality:	Monoclonal
Immunogen:	Recombinant human BCMA (Met1-Ala54) (TP723924) produced by using human HEK293 cells
Formulation:	Lyophilized from sterile PBS, pH 7.4. Normally 5 % - 8 % trehalose is added as protectants before lyophilization. Preservative: 0.1% Procline 300
Reconstitution Method:	Reconstitute with deionized water
Purification:	Purified from cell culture supernatant by affinity chromatography
Conjugation:	Unconjugated
Storage:	Store at -20°C for 12 months (Avoid repeated freezing and thawing)
Stability:	12 months from date of despatch
Predicted Protein Size:	20kDa
Gene Name:	tumor necrosis factor receptor superfamily member 17
Database Link:	Entrez Gene 608 Human Q02223
Background:	The protein encoded by this gene is a member of the TNF-receptor superfamily. This receptor is preferentially expressed in mature B lymphocytes, and may be important for B cell development and autoimmune response. This receptor has been shown to specifically bind to the tumor necrosis factor (ligand) superfamily, member 13b (TNFSF13B/TALL-1/BAFF), and to lead to NF-kappaB and MAPK8/JNK activation. This receptor also binds to various TRAF family members, and thus may transduce signals for cell survival and proliferation. [provided by RefSeq, Jul 2008]



[View online »](#)

Synonyms: BCM; BCMA; CD269

Product images:

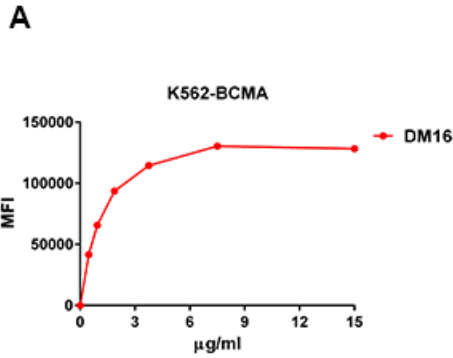


Figure 1. Detection of BCMA/ TNFRSF 17 in K562-BCMA (K562 cells transduced with gene for full length BCMA) Human Cell Line or NCI-H929 Human Cell Line with Rabbit Anti-Human BCMA/TNFRSF 17 Antigen Affinity-purified monoclonal antibody (clone: DM16) by Flow Cytometry.

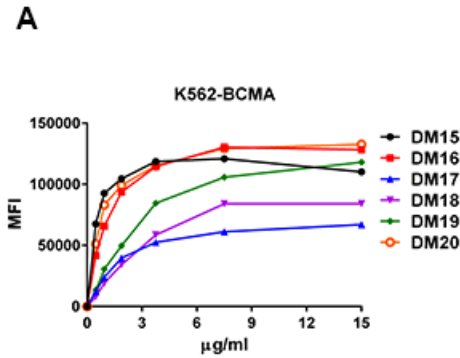


Figure 2. Binding of different clone Rabbit Anti-Human BCMA/TNFRSF 17 Antigen Affinity-purified monoclonal antibody to NCI-H929 and K562-BCMA cells was determined by flow cytometry.

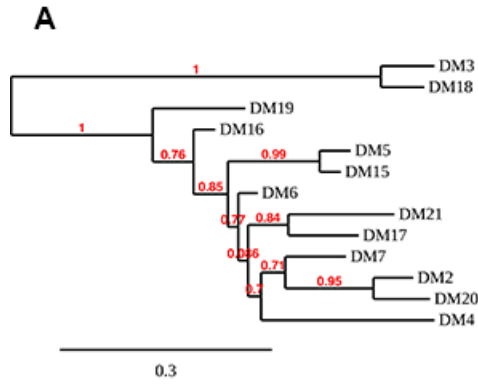


Figure 3. Phylogenetic analysis of different clone Rabbit Anti-Human BCMA/TNFRSF 17 Antigen Affinity-purified monoclonal antibody A) heavy chain and B) Light chain.

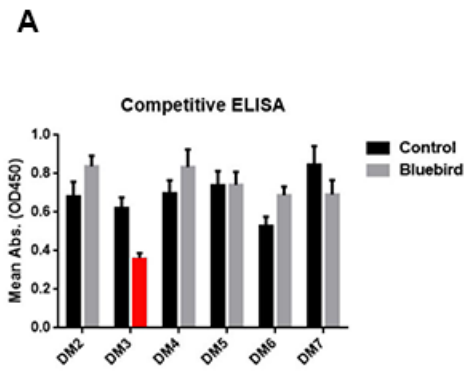


Figure 4. ELISA plate was coated with recombinant BCMA-hFc fusion protein ([TP723924]), followed by pre-blocking with huC11D5.3 antibody (Grey bar) or rabbit control IgG (Black bar), and then different rabbit Abs antibodies were added to check the competitive inhibition of huC11D5.3. DM3 clone exhibits the strongest inhibition (Red bar). This data indicated that DM3 bind to the same epitope as bb2121.