

Product datasheet for **TA355167**

CD22 Rabbit Monoclonal Antibody [Clone ID: DM13]

Product data:

Product Type:	Primary Antibodies
Clone Name:	DM13
Applications:	ELISA, FC, IF, IP, WB
Recommended Dilution:	Flow Cyt 1/100
Reactivity:	Human
Host:	Rabbit
Isotype:	IgG
Clonality:	Monoclonal
Immunogen:	Recombinant human CD22 (Asp20-Arg687)(TP723928) produced by using human HEK293 cells
Formulation:	Lyophilized from sterile PBS, pH 7.4. Normally 5 % - 8 % trehalose is added as protectants before lyophilization. Preservative: 0.1% Procline 300
Reconstitution Method:	Reconstitute with deionized water
Purification:	Purified from cell culture supernatant by affinity chromatography
Conjugation:	Unconjugated
Storage:	Store at -20°C for 12 months (Avoid repeated freezing and thawing)
Stability:	12 months from date of despatch
Predicted Protein Size:	95kDa
Gene Name:	CD22 molecule
Database Link:	Entrez Gene 933 Human P20273
Background:	CD22 (CD22 Molecule) is a Protein Coding gene. Diseases associated with CD22 include Refractory Hematologic Cancer and Hairy Cell Leukemia. Among its related pathways are Downstream signaling events of B Cell Receptor (BCR) and Hematopoietic cell lineage. Gene Ontology (GO) annotations related to this gene include carbohydrate binding. An important paralog of this gene is SIGLEC2.



[View online »](#)

Synonyms: BL-CAM; FLJ22814; Leu-14; MGC130020; Siglec-2; SIGLEC2

Product images:

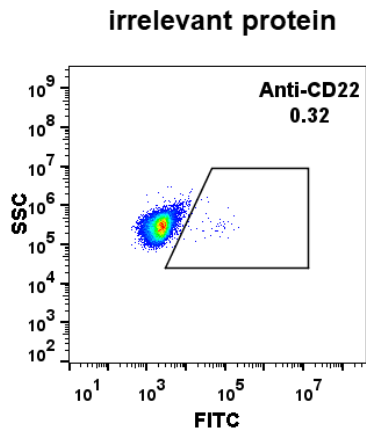


Figure 1. Expi 293 cell line transfected with irrelevant protein (left) and human CD22 (right) were surface stained with Rabbit anti- CD22 monoclonal antibody 1µg/ml (clone: DM13) followed by Alexa 488-conjugated anti-rabbit IgG secondary antibody.

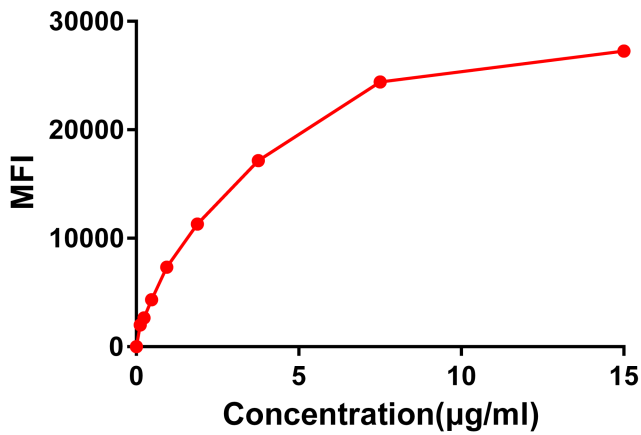


Figure 2. Flow cytometry data of serially titrated Rabbit anti-CD22 monoclonal antibody (clone: DM13) on Raji cells. The Y-axis represents the mean fluorescence intensity (MFI) while the X-axis represents the concentration of IgG used.