

Product datasheet for **TA355158**

SARS-CoV-2 N Protein Rabbit Monoclonal Antibody

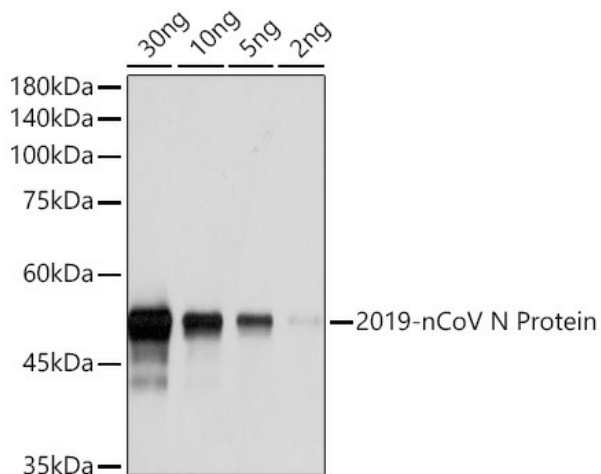
Product data:

Product Type:	Primary Antibodies
Applications:	ELISA, FC, IF, IHC, IP, WB
Recommended Dilution:	WB: 1:1000 - 1:5000 Elisa: 1:1000 - 1:5000 FCM: 1:50 - 1:200 IHC: 1:50 - 1:200 IF: 1:50 - 1:200 IP: 1:50 - 1:200
Reactivity:	SARS-CoV-2
Host:	Rabbit
Isotype:	IgG
Clonality:	Monoclonal
Immunogen:	Recombinant full-length protein of SARS-CoV-2 Nucleoprotein.
Formulation:	PBS with 0.02% Sodium Azide, pH7.3.
Purification:	Affinity purification
Conjugation:	Unconjugated
Storage:	Store at -20°C. Avoid freeze / thaw cycles.
Stability:	1 year
Database Link:	P59595



[View online »](#)

Product images:



Western blot analysis of 2019-nCoV N Protein using 2019-nCoV N Protein Rabbit mAb (TA355158) at 1:1000 dilution. Secondary antibody: HRP Goat Anti-Rabbit IgG (H+L) at 1:10000 dilution. Blocking buffer: 3% nonfat dry milk in TBST. Detection: ECL Basic Kit. Exposure time: 5s.