

## Product datasheet for **TA355157**

### ACE2 Rabbit Polyclonal Antibody (Angiotensin Converting Enzyme 2)

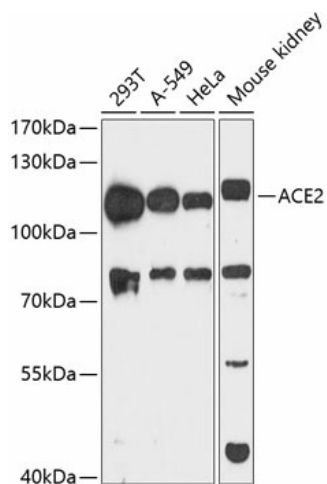
#### Product data:

Product Type:	Primary Antibodies
Applications:	ICC/IF, IHC, WB
Recommended Dilution:	WB: 1:500 - 1:2000
Reactivity:	Human, Mouse, Rat
Host:	Rabbit
Isotype:	IgG
Clonality:	Polyclonal
Immunogen:	recombinant protein
Formulation:	PBS with 0.02% sodium azide, 50% glycerol, pH 7.3.
Purification:	Affinity purification
Conjugation:	Unconjugated
Storage:	Store at -20°C. Avoid freeze / thaw cycles.
Stability:	1 year
Gene Name:	angiotensin I converting enzyme 2
Database Link:	<a href="#">Entrez Gene 59272 Human Q9BYF1</a>
Synonyms:	ACEH; DKFZp434A014



[View online »](#)

## Product images:



Western blot analysis of extracts of various cell lines, using ACE2 antibody (TA355157) at 1:3000 dilution. Secondary antibody: HRP Goat Anti-Rabbit IgG (H+L) at 1:10000 dilution. Lysates/proteins: 25ug per lane. Blocking buffer: 3% nonfat dry milk in TBST. Detection: ECL Enhanced Kit. Exposure time: 60s.