

Product datasheet for **TA355156**

TMPRSS2 Rabbit Polyclonal Antibody

Product data:

Product Type:	Primary Antibodies
Applications:	IHC, WB
Recommended Dilution:	WB 1:500 -1:2000, IHC 1:50 -1:200
Reactivity:	Human, Mouse, Rat
Host:	Rabbit
Isotype:	IgG
Clonality:	Polyclonal
Immunogen:	Recombinant full length protein of human TMPRSS2
Formulation:	0.42% Potassium phosphate; 0.87% NaCl; pH 7.3; 30% glycerol; and 0.01% sodium azide
Purification:	Affinity purified
Conjugation:	Unconjugated
Storage:	Store at -20°C. Avoid freeze / thaw cycles
Stability:	1 year
Gene Name:	transmembrane protease, serine 2
Database Link:	Entrez Gene 7113 Human O15393

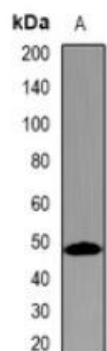
Background: This gene encodes a protein that belongs to the serine protease family. The encoded protein contains a type II transmembrane domain, a receptor class A domain, a scavenger receptor cysteine-rich domain and a protease domain. Serine proteases are known to be involved in many physiological and pathological processes. This gene was demonstrated to be up-regulated by androgenic hormones in prostate cancer cells and down-regulated in androgen-independent prostate cancer tissue. The protease domain of this protein is thought to be cleaved and secreted into cell media after autocleavage. This protein also facilitates entry of viruses into host cells by proteolytically cleaving and activating viral envelope glycoproteins. Viruses found to use this protein for cell entry include Influenza virus and the human coronaviruses HCoV-229E, MERS-CoV, SARS-CoV and SARS-CoV-2 (COVID-19 virus). Alternatively spliced transcript variants encoding different isoforms have been found for this gene.



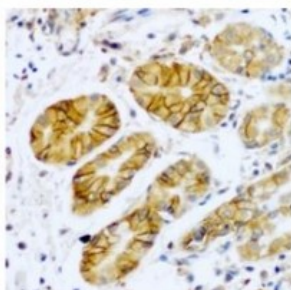
[View online »](#)

Synonyms: epitheliasin; OTTHUMP00000207917; PP9284; PRSS10

Product images:



Western blot analysis of 22RV1 whole cell lysates using Anti-TMPRSS2 antibody



Immunohistochemical analysis of TMPRSS2 staining in formalin fixed paraffin embedded human stomach cancer tissue section. The section was first subjected to antigen retrieval with sodium citrate buffer (pH 6.0), then incubated with the antibody at RT and detected using an HRP conjugated compact polymer system. The chromogen used was DAB. Counterstaining of the section was performed with hematoxylin and mounted with DPX.