

Product datasheet for **TA355117**

GI24 (C10orf54) Mouse Monoclonal Antibody [Clone ID: 4C4]

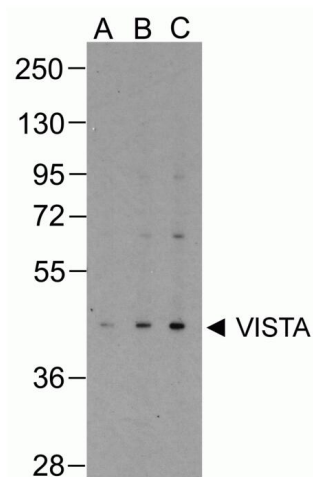
Product data:

Product Type:	Primary Antibodies
Clone Name:	4C4
Applications:	ELISA, FC, IF, IHC, WB
Recommended Dilution:	WB start at 0.25 - 1 ug/mL. IHC start at 2 ug/mL. ICC start at 1 ug/mL. IF start at 2 ug/mL.
Reactivity:	Human
Host:	Mouse
Isotype:	IgG1
Clonality:	Monoclonal
Immunogen:	VISTA antibody was raised against the extracellular domain of human VISTA.
Formulation:	VISTA Antibody is supplied in PBS containing 0.02% sodium azide.
Concentration:	1 mg/ml
Purification:	VISTA Antibody is supplied as protein A purified IgG1.
Conjugation:	Unconjugated
Storage:	Store at -20°C as received.
Stability:	Stable for 12 months from date of receipt.
Predicted Protein Size:	Predicted: 31 kDa; Observed: 47 kDa
Gene Name:	chromosome 10 open reading frame 54
Database Link:	NP_071436 Entrez Gene 64115 Human Q9H7M9
Background:	VISTA Antibody: VISTA/B7-H5/platelet receptor Gi24 is a single-pass type I membrane protein located at the cell surface. It is an immunoregulatory receptor which can inhibit T-cell response and may promote differentiation of embryonic stem cells, by inhibiting the BMP4 signaling pathway. The protein can be cleaved by MMP14, and stimulate MMP14-mediated MMP2 activation.
Synonyms:	GI24; PP2135; SISP1

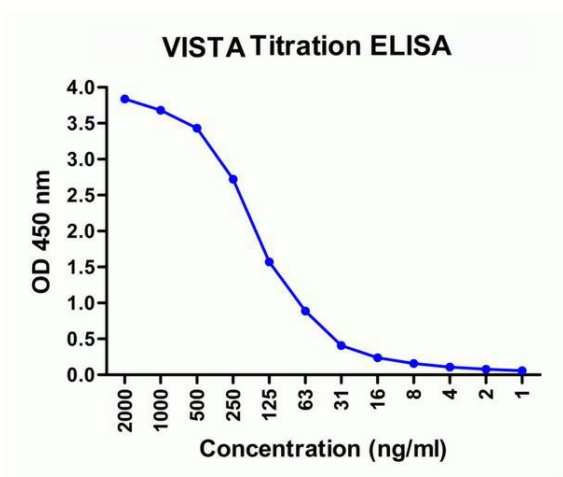


[View online »](#)

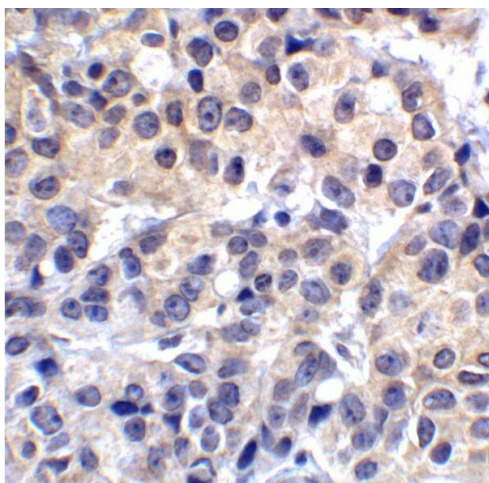
Product images:



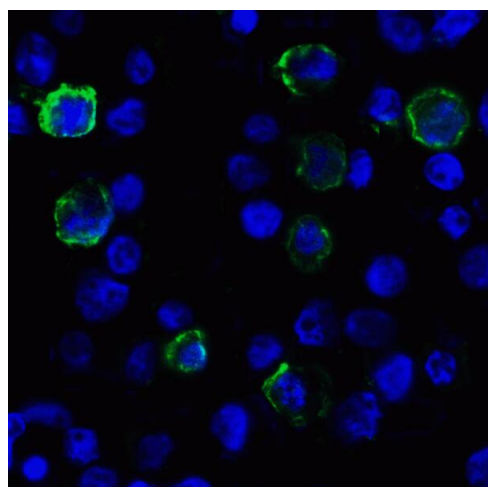
Western blot analysis of VISTA in overexpressing HEK293 cells with VISTA antibody at (A) 0.25 (B) 0.5 and (C) 1 ug/ml



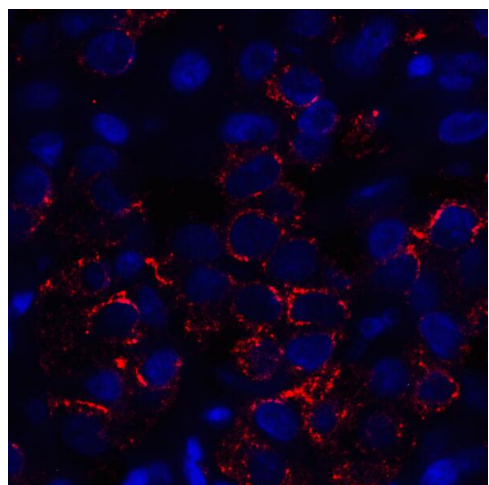
Titration curve analysis of VISTA antibody to detect recombinant VISTA in ELISA at decreasing concentrations.



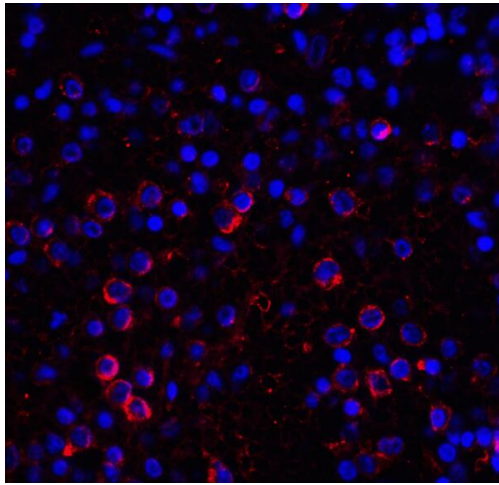
Immunohistochemistry of VISTA in human lymphoma tissue with VISTA antibody at 2 ug/mL.



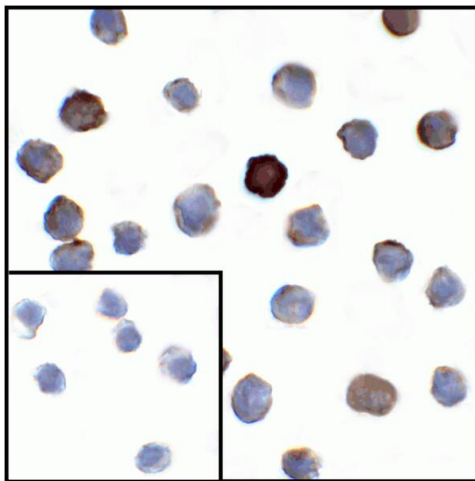
Immunofluorescence of VISTA in transfected HEK293 cells with VISTA antibody at 2 ug/mL.



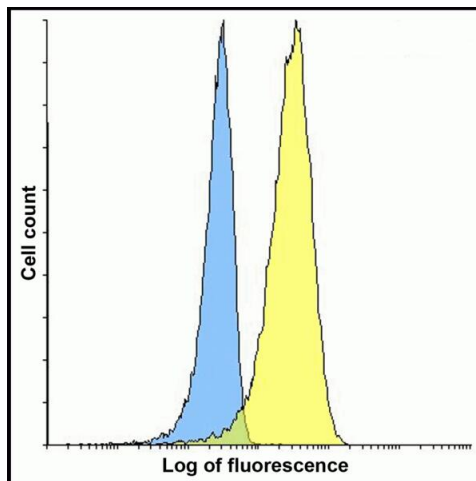
Immunofluorescence of VISTA in human lymphoma tissue with VISTA antibody at 5 ug/mL.



Immunofluorescence of VISTA in human spleen tissue with VISTA antibody at 10 ug/mL.



Immunocytochemistry of VISTA in transfected HEK293 cells with VISTA antibody at 1 ug/mL. Lower left: Immunocytochemistry in transfected HEK293 cells with control mouse IgG antibody at 1 ug/mL.



Flow cytometry analysis of VISTA overexpressing HEK293 cells using VISTA antibody and control mouse IgG antibody at 10 ug/ml. Blue: Untransfected HEK293 cells. Yellow: VISTA overexpressing HEK293 cells.