

Product datasheet for **TA355106**

Phospholamban (PLN) Rabbit Polyclonal Antibody

Product data:

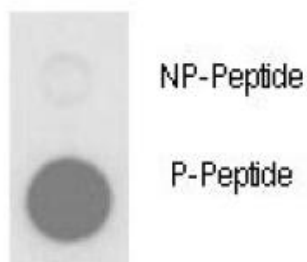
Product Type:	Primary Antibodies
Applications:	Dot
Recommended Dilution:	DB 1:500
Reactivity:	Human
Host:	Rabbit
Isotype:	IgG
Clonality:	Polyclonal
Immunogen:	The PLB Antibody is generated from rabbits immunized with a KLH conjugated synthetic phosphopeptide corresponding to amino acid residues surrounding T17 of human PLB.
Formulation:	PBS with 0.09% (W/V) sodium azide
Purification:	This antibody is purified through a protein A column, followed by peptide affinity purification
Conjugation:	Unconjugated
Storage:	Store at -20°C as received.
Stability:	Stable for 12 months from date of receipt.
Predicted Protein Size:	6.1 kDa
Gene Name:	phospholamban
Database Link:	NP_002658 Entrez Gene 5350 Human P26678
Background:	Phospholamban (PLB) is a 52 amino acid phosphoprotein which regulates the calcium pump of cardiac sarcoplasmic reticulum (SR). PLB is an oligomer of five identical subunits each having a cytoplasmic and transmembrane domain. The cytoplasmic domain (residues 1 to 25) contains the phosphorylation sites and is highly basic and readily cleaved by proteases; whereas the transmembrane domain (residues 25 to 52) is mostly hydrophobic, protease resistant and stabilizes the pentamer.
Synonyms:	CMD1P; phospholamban; PLB
Protein Families:	Transmembrane



[View online »](#)

Protein Pathways: Calcium signaling pathway, Dilated cardiomyopathy

Product images:



Dot blot analysis of anti-Phospho-PLB-T17 Phospho-specific Pab on nitrocellulose membrane. 50ng of Phospho-peptide or Non Phospho peptide per dot were adsorbed. Antibody working concentrations are 0.5ug per ml.

Dot Blot