

Product datasheet for **TA355095**

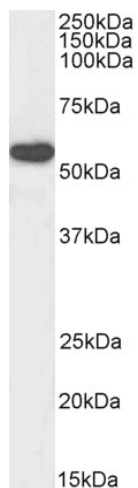
C22orf28 (RTCB) Goat Polyclonal Antibody

Product data:

Product Type:	Primary Antibodies
Applications:	WB
Recommended Dilution:	ELISA 1:64000,WB:0.1-0.3 µg/ml
Reactivity:	Human
Host:	Goat
Clonality:	Polyclonal
Immunogen:	Peptide with sequence C-QADPNKVSARAKKR., from the internal region of the protein sequence according to NP_055121.1.
Formulation:	Supplied at 0.5 mg/ml in Tris saline, 0.02% sodium azide, pH7.3 with 0.16% bovine serum albumin.
Concentration:	lot specific
Purification:	Purified from goat serum by ammonium sulphate precipitation followed by antigen affinity chromatography using the immunizing peptide.
Conjugation:	Biotin
Storage:	Store at -20°C as received.
Stability:	Stable for 12 months from date of receipt.
Predicted Protein Size:	55.2 kDa
Gene Name:	RNA 2',3'-cyclic phosphate and 5'-OH ligase
Database Link:	NP_055121 Entrez Gene 51493 Human Q9Y3I0
Synonyms:	C22orf28; DJ149A16.6; FAAP; HSPC117; RP1-149A16.6



[View online »](#)

Product images:

Biotinylated TA355095 (0.3ug/ml) staining of HeLa lysate (35ug protein in RIPA buffer). Primary incubation was 1 hour. Detected by chemiluminescence, using streptavidin-HRP and using NAP blocker as a substitute for skimmed milk.