

## Product datasheet for **TA355058**

### CTLA4 Mouse Monoclonal Antibody [Clone ID: 2G10]

#### Product data:

Product Type:	Primary Antibodies
Clone Name:	2G10
Applications:	ELISA, IF, IHC, WB
Recommended Dilution:	WB: 1-2µg/mL.IHC starting at 5µg/mL.IF start at 20µg/mL.
Reactivity:	Human
Host:	Mouse
Isotype:	IgG1
Clonality:	Monoclonal
Immunogen:	CTLA-4 antibody was raised against the extracellular domain of human CTLA-4.
Formulation:	CTLA-4 Antibody is supplied in PBS containing 0.02% sodium azide.
Concentration:	1 mg/ml
Purification:	CTLA-4 Antibody is supplied as protein A purified IgG1.
Conjugation:	Unconjugated
Storage:	Store at -20°C as received.
Stability:	Stable for 12 months from date of receipt.
Predicted Protein Size:	Predicted: 25 kDa; Observed: 32 kDa
Gene Name:	cytotoxic T-lymphocyte associated protein 4
Database Link:	<a href="#">NP_005205</a> <a href="#">Entrez Gene 1493 Human</a> <a href="#">P16410</a>
Background:	The cytotoxic T-lymphocyte-associated protein 4 (CTLA-4), also known as CD152, is a member of the immunoglobulin superfamily that is expressed by activated T cells and transmits an inhibitory signal to T cells (1,2). Both it and the homologous T-cell co-stimulatory protein CD28 bind to CD80 (B7-H1) and CD86 (B7-H2) on antigen-presenting cells (APCs) (3). Mutations in the CTLA-4 gene have been implicated in multiple autoimmune diseases (4). CTLA-4 also functions as an immune checkpoint protein, and anti- CTLA-4 antibodies have been successfully used in the treatment of cancer (5).

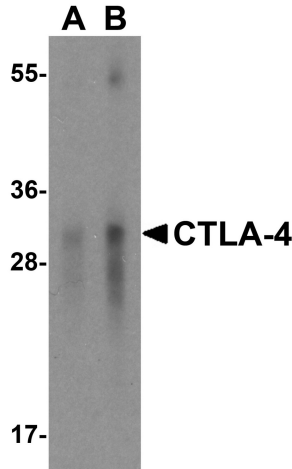


[View online »](#)

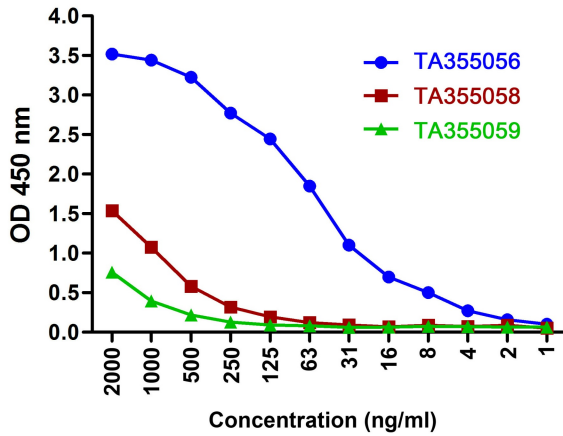
**Synonyms:** CD; CD28; CD152; CELIAC3; CTLA-4; GRD4; GSE; ICOS; IDDM12

**Note:** CTLA-4 antibody can be used for detection of CTLA-4 by Western blot at 1 - 2 µg/mL. Antibody can also be used for immunohistochemistry starting at 5 µg/mL. For immunofluorescence start at 20 µg/mL.

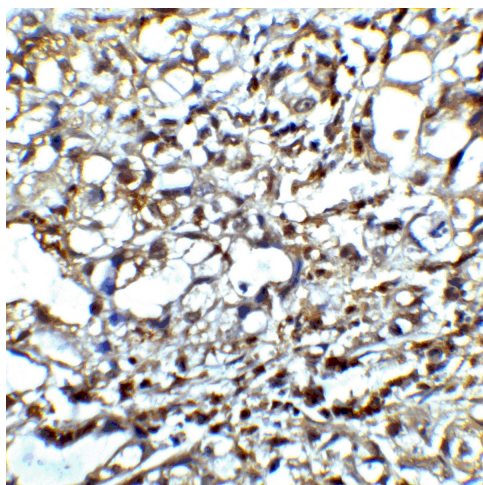
**Product images:**



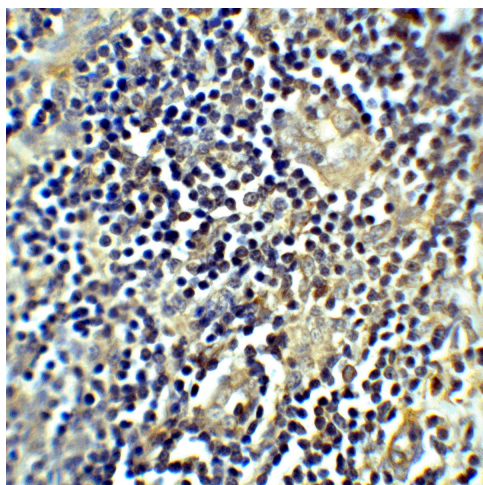
Western blot analysis of CTLA-4 in overexpressing HEK293 cells CTLA-4 antibody at 0.5 and 1ug/mL.



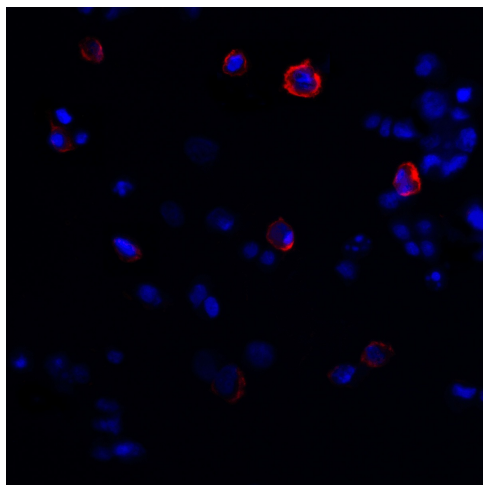
Titration curve analysis of CTLA-4 mAbs to detect recombinant CTLA-4 in ELISA with [TA355056], TA355058, and [TA355059] antibodies at decreasing concentrations.



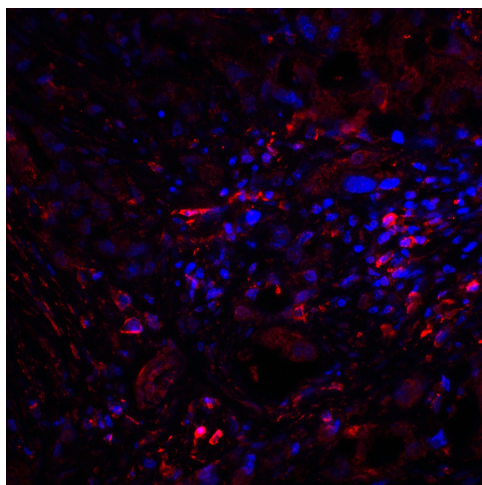
Immunohistochemistry of CTLA-4 in human lymph node tissue with CTLA-4 antibody at 5ug/mL.



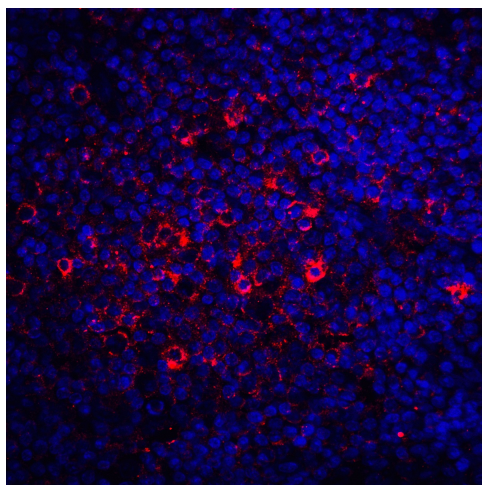
Immunohistochemistry of CTLA-4 in human tonsil tissue with CTLA-4 antibody at 5ug/mL.



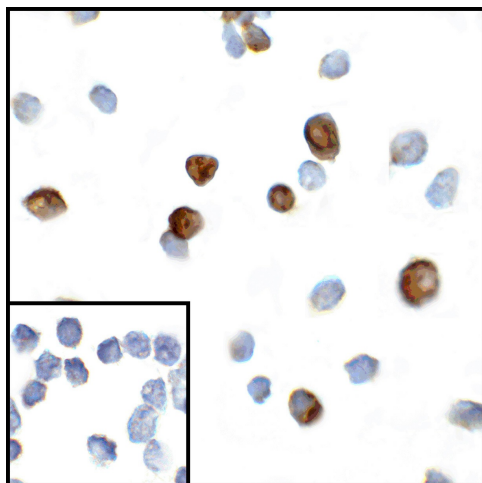
Immunofluorescence of CTLA-4 in transfected HEK293 cells with CTLA-4 antibody at 20ug/mL.



Immunofluorescence of CTLA-4 in human lymph node tissue with CTLA-4 antibody at 20ug/mL.



Immunofluorescence of CTLA-4 in human tonsil tissue with CTLA-4 antibody at 20ug/mL.



Immunocytochemistry of CTLA-4 in transfected HEK293 cells with CTLA-4 antibody at 5ug/mL. Lower left: Immunocytochemistry in transfected HEK293 cells with control mouse IgG antibody at 5ug/mL.