

Product datasheet for **TA355048**

Vinculin (VCL) Mouse Monoclonal Antibody [Clone ID: 8B5]

Product data:

Product Type:	Primary Antibodies
Clone Name:	8B5
Applications:	WB
Recommended Dilution:	WB: 0.5-1µg/ml.
Reactivity:	Human, Mouse, Rat, Rabbit, Chicken
Host:	Mouse
Isotype:	IgG
Clonality:	Monoclonal
Immunogen:	Vinculin antibody was raised against a 23 amino acid peptide near the amino terminus of human Vinculin.
Formulation:	Vinculin Antibody is supplied in PBS containing 0.02% sodium azide.
Concentration:	1 mg/ml
Purification:	Vinculin antibody is purified via Protein A purification.
Conjugation:	Unconjugated
Storage:	Store at -20°C as received.
Stability:	Stable for 12 months from date of receipt.
Predicted Protein Size:	Predicted: 117 kDa; Observed: 120 kDa
Gene Name:	vinculin
Database Link:	NP_003364 Entrez Gene 7414 Human P18206
Background:	Vinculin is a cytoskeletal protein that plays an important role in the regulation of focal adhesions and embryonic development (1). Three structural vinculin domains include an amino-terminal head, a short flexible proline-rich region and a carboxy-terminal tail (2). Expression of vinculin were shown to be affected by the level of actin expression (2,3). Vinculin deficiencies are associated with a decrease in cell adhesion and an increase in cell motility, suggesting a possible role in metastatic growth (4). Defects in VCL are the cause of cardiomyopathy dilated type 1W (CMD1W) (5).

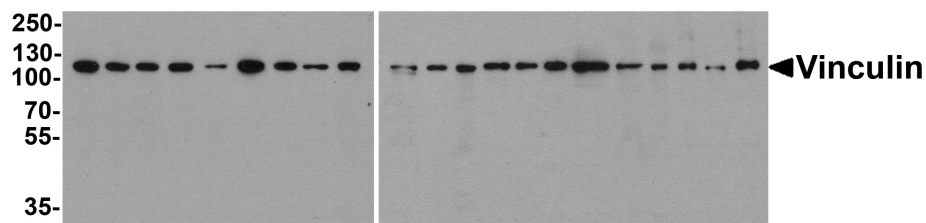


[View online »](#)

Synonyms: CMD1W; metavinculin; MVCL; vinculin

Note: Vinculin antibody can be used for detection of Vinculin by Western blot at 0.5 - 1 $\mu\text{g}/\text{ml}$.

Product images:



Western blot analysis of Vinculin in 293, A431, A549, HeLa, HepG2, K562, 3T3, Raji, U937 cell lysate and human kidney, human breast, mouse brain, mouse lung, mouse spleen, rat heart, rat lung, rat spleen, rat liver, rabbit spleen, rabbit brain and chicken spleen tissue lysate with Vinculin antibody at 1 $\mu\text{g}/\text{ml}$.