

## Product datasheet for **TA355046**

### alpha Tubulin (TUBA1A) Mouse Monoclonal Antibody [Clone ID: 2B11]

#### Product data:

Product Type:	Primary Antibodies
Clone Name:	2B11
Applications:	WB
Recommended Dilution:	WB: 1-2µg/ml.
Reactivity:	Human, Mouse, Rat, Rabbit, Zebrafish
Host:	Mouse
Isotype:	IgG
Clonality:	Monoclonal
Immunogen:	alpha-Tubulin antibody was raised against an 18 amino acid peptide near the carboxy terminus of human alpha-Tubulin
Formulation:	alpha-Tubulin antibody is supplied in PBS containing 0.02% sodium azide.
Concentration:	1 mg/ml
Purification:	alpha-Tubulin antibody is affinity chromatography purified via peptide column.
Conjugation:	Unconjugated
Storage:	Store at -20°C as received.
Stability:	Stable for 12 months from date of receipt.
Predicted Protein Size:	Predicted: 50 kDa; Observed: 54 kDa
Gene Name:	tubulin alpha 1a
Database Link:	<a href="#">NP_006000</a> <a href="#">Entrez Gene 22142 Mouse</a> <a href="#">Entrez Gene 64158 Rat</a> <a href="#">Entrez Gene 7846 Human</a> <a href="#">Q71U36</a>



[View online »](#)

**Background:**

Alpha-Tubulin belongs to the tubulin superfamily, which is composed of six distinct families. Along with beta-tubulins, alpha-Tubulins are the major components of microtubules. These microtubules are involved in a wide variety of cellular activities ranging from mitosis and transport events to cell movement and the maintenance of cell shape. Alpha- and beta-tubulin dimers are assembled to 13 protofilaments that form a microtubule of 22-nm diameter (reviewed in 1). Tyrosine ligase adds a C-terminal tyrosine to monomeric alpha-Tubulin. Assembled microtubules can again be detyrosinated by a cytoskeleton-associated carboxypeptidase (2). Another post-translational modification of detyrosinated alpha-Tubulin is C-terminal polyglutamylation, which is characteristic of microtubules in neuronal cells and the mitotic spindle (3). Like GAPDH and  $\beta$ -Actin, this antibody makes an excellent loading control in immunoblots.

**Synonyms:**

B-ALPHA-1; FLJ25113; hum-a-tub1; hum-a-tub2; LIS3; TUBA3

**Note:**

alpha-Tubulin antibody can be used for detection of alpha-Tubulin by Western blot at 1 - 2  $\mu$ g/ml.

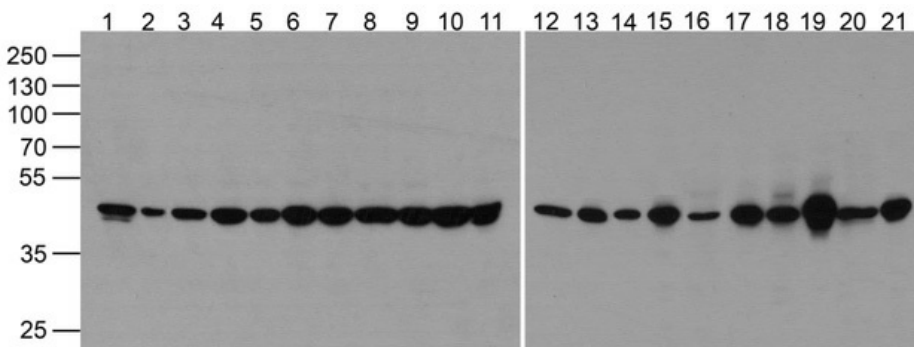
**Protein Families:**

Druggable Genome

**Protein Pathways:**

Gap junction, Pathogenic Escherichia coli infection

**Product images:**



Western blot of alpha-Tubulin in 293, A431, A549, Daudi, HeLa, HepG2, Jurkat, K562, MOLT4, 3T3, Raji, Ramos, THP-1, U937, human brain, mouse brain, rat brain, rabbit brain, mouse lung, rat lung, mouse liver, rabbit spleen and zebrafish lysate at 1  $\mu$ g/ml.