

## Product datasheet for **TA355037**

### GAPDH Rabbit Polyclonal Antibody

#### Product data:

Product Type:	Primary Antibodies
Applications:	WB
Recommended Dilution:	WB: 0.5-1 $\mu$ /ml.
Reactivity:	Human, Mouse, Rat, Rabbit, Chicken
Host:	Rabbit
Isotype:	IgG
Clonality:	Polyclonal
Immunogen:	Biotin-GAPDH antibody was raised against a synthetic peptide containing 16 amino acids near the carboxy terminus of GAPDH.
Formulation:	Biotin-GAPDH antibody is supplied in PBS containing 0.02% sodium azide.
Concentration:	1 mg/ml
Purification:	Biotin-GAPDH antibody is affinity chromatography purified via peptide column.
Conjugation:	Biotin
Storage:	Store at -20°C as received.
Stability:	Stable for 12 months from date of receipt.
Predicted Protein Size:	Predicted: 37 kDa; Observed: 36 kDa
Gene Name:	glyceraldehyde-3-phosphate dehydrogenase
Database Link:	<a href="#">NP_002037</a> <a href="#">Entrez Gene 2597 Human</a> <a href="#">P04406</a>



[View online »](#)

**Background:**

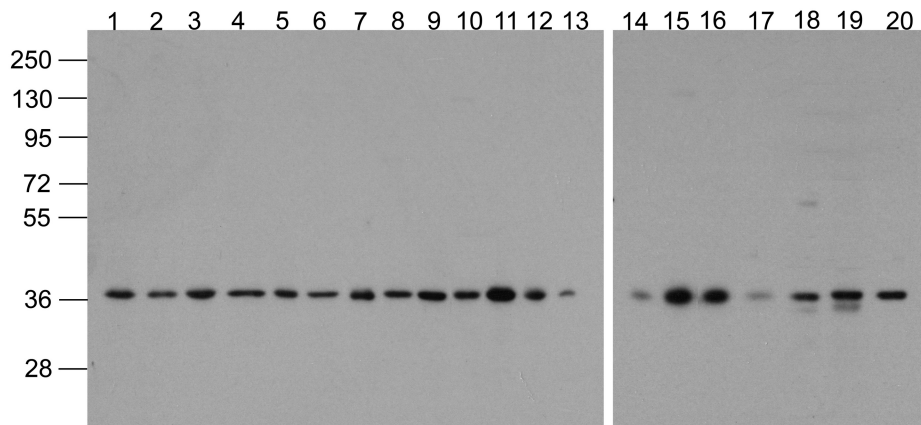
Glyceraldehyde-3-phosphate dehydrogenase (GAPDH) catalyzes the reversible oxidative phosphorylation of glyceraldehyde-3-phosphate in the presence of inorganic phosphate and nicotinamide adenine dinucleotide (NAD), an important energy-yielding step in carbohydrate metabolism. It also is involved in a number of cellular processes such as membrane fusion, phosphotransferase activity, DNA replication and repair, and nuclear RNA export (1). GAPDH also plays a role in different pathologies such as cancer progression, apoptosis, and neuronal diseases such as Alzheimer's and Huntington's disease (2). GAPDH is constitutively expressed at high levels in almost all tissues and cell lines making it ideal for use as a loading control marker in immunoblots.

**Synonyms:**

G3PD; GAPD; MGC88685; OTTHUMP00000174431; OTTHUMP00000174432

**Note:**

Biotin-GAPDH antibody can be used for detection of GAPDH by Western blot at 0.5 - 1  $\mu$ /ml.

**Product images:**

Western blot analysis of GAPDH in 293, A431, A549, Daudi, HeLa, HepG2, Jurkat, K562, MOLT4, 3T3, Raji, Ramos, U937, human brain, mouse brain, rat brain, mouse lung, mouse liver, rat liver, and chicken small intestine lysate with Biotin-GAPDH antibody at 1  $\mu$ g/ml.