

Product datasheet for **TA355035**

beta Actin (ACTB) Rabbit Polyclonal Antibody

Product data:

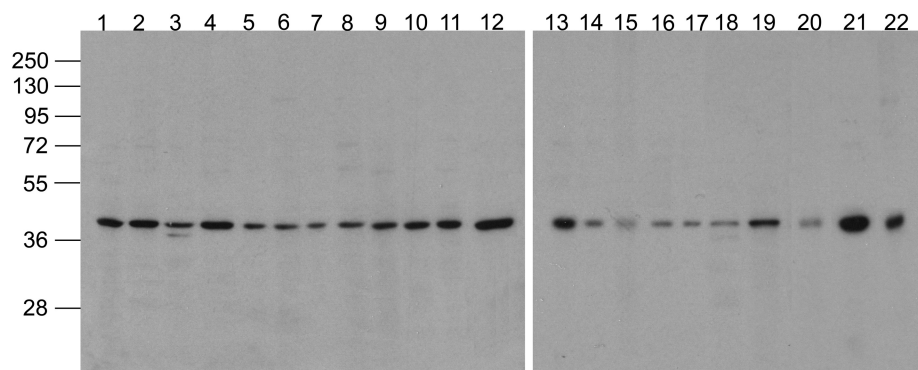
| | |
|-------------------------|--|
| Product Type: | Primary Antibodies |
| Applications: | WB |
| Recommended Dilution: | WB: 0.5-1 μ /ml. |
| Reactivity: | Human, Mouse, Rat, Rabbit, Chicken, Drosophila |
| Host: | Rabbit |
| Isotype: | IgG |
| Clonality: | Polyclonal |
| Immunogen: | Biotin-Beta-Actin antibody was raised against a synthetic peptide containing 16 amino acids near the amino terminus of beta-actin. |
| Formulation: | Biotin-Beta-Actin antibody is supplied in PBS containing 0.02% sodium azide. |
| Concentration: | 1 mg/ml |
| Purification: | Biotin-Beta-Actin antibody is affinity chromatography purified via peptide column. |
| Conjugation: | Biotin |
| Storage: | Store at -20°C as received. |
| Stability: | Stable for 12 months from date of receipt. |
| Predicted Protein Size: | Predicted: 42 kDa; Observed: 42 kDa |
| Gene Name: | actin, beta |
| Database Link: | AAH02409 Entrez Gene 60 Human P60709 |
| Background: | Actins are highly conserved proteins that are involved in cell motility, structure and integrity, processes that are crucial for tissue development and the development of organism. The actin cytoskeleton is one of the principal drivers of cell motility and is capable of responding to complex signaling cascades. Recent evidence suggests that it may play key roles in regulating apoptosis and aging. Beta actin is one of six different actin isoforms which have been identified. Like GAPDH, beta-Actin is constitutively expressed at high levels in almost all tissues and cell lines making it ideal for use as a loading control marker in immunoblots. |
| Synonyms: | Beta-actin; PS1TP5BP1 |



[View online »](#)

Note: Biotin-Beta-Actin antibody can be used for detection of Beta-Actin by Western blot at 0.5 - 1 μ /ml.

Product images:



Western blot analysis of Actin in 293, A431, A549, Daudi, HeLa, HepG2, Jurkat, K562, MOLT4, 3T3, Raji, THP-1, mouse brain, rat brain, rabbit brain, mouse lung, rat lung, mouse liver, rat liver, rabbit spleen, chicken small intestine, and drosophila lysate with Biotin-Beta-Actin antibody at 1ug/mL.