

## Product datasheet for **TA355034**

### **B7H3 (CD276) Rabbit Polyclonal Antibody**

#### **Product data:**

Product Type:	Primary Antibodies
Applications:	IF, IHC, WB
Recommended Dilution:	WB: 0.5-1 µg/mL. IHC: 2 µg/mL. Immunofluorescence start at 20 µg/mL.
Reactivity:	Human, Mouse, Rat
Host:	Rabbit
Isotype:	IgG
Clonality:	Polyclonal
Immunogen:	CD276 antibody was raised against a peptide corresponding to 19 amino acids near the carboxy terminus of CD276. The immunogen is located within amino acids 484 - 534 of CD276.
Formulation:	CD276 Antibody is supplied in PBS containing 0.02% sodium azide.
Concentration:	1 mg/ml
Purification:	CD276 Antibody is affinity chromatography purified via peptide column.
Conjugation:	Unconjugated
Storage:	Store at -20°C as received.
Stability:	Stable for 12 months from date of receipt.
Predicted Protein Size:	Predicted: 35, 43, 57 kDa; Observed: 59 kDa
Gene Name:	CD276 molecule
Database Link:	<a href="#">NP_001019907</a> <a href="#">Entrez Gene 80381 Human</a> <a href="#">Q5ZPR3</a>
Background:	CD276, also known as B7-H3, was initially identified as a member of the B7 family of proteins through its homology with previously identified B7 molecules (1). CD276 mRNA is widely expressed, but its protein expression is usually rather low (2). CD276 has been shown to play a role in both the costimulation as well as the coinhibition of T cell response (3). In a similar fashion, CD276 plays a critical role in the control of antitumor immune responses in some cases, while in others appears to mediate antitumor immunity (4). It thus joins other immune checkpoint proteins as a possible therapeutic target for at least a subset of cancers.

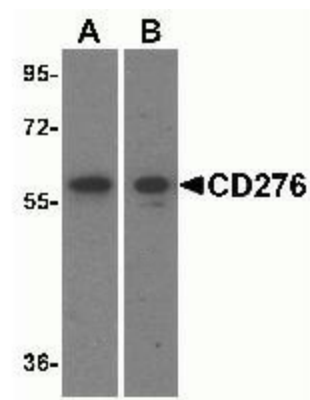


[View online »](#)

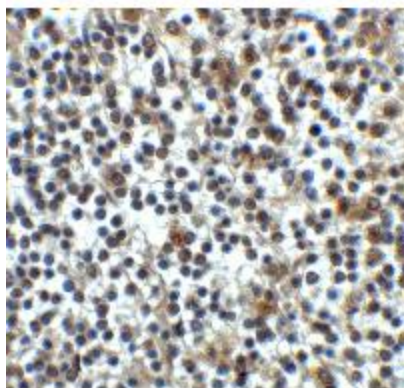
**Synonyms:** 4lg-B7-H3; B7-H3; B7H3

**Note:** CD276 antibody can be used for Western blot at 0.5 - 1  $\mu\text{g/mL}$ . Antibody can also be used for Immunohistochemistry at 2  $\mu\text{g/mL}$ . For Immunofluorescence start at 20  $\mu\text{g/mL}$ .

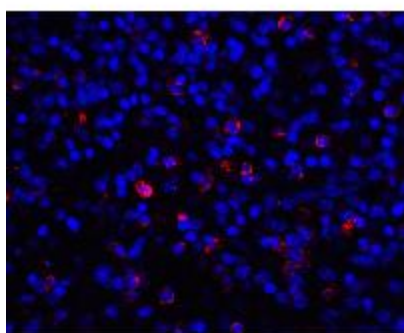
**Product images:**



Western blot analysis of CD276 in (A) human spleen and (B) mouse spleen tissue lysate with CD276 antibody at 0.5 $\mu\text{g/mL}$ .



Immunohistochemistry of CD276 in human spleen tissue with CD276 antibody at 2 $\mu\text{g/mL}$ .



Immunofluorescence of CD276 in human spleen tissue with CD276 antibody at 20 $\mu\text{g/mL}$ .