

## Product datasheet for **TA355031**

### TIM 3 (HAVCR2) Rabbit Polyclonal Antibody

#### Product data:

|                         |   |
|-------------------------|---|
| Product Type:           | Primary Antibodies  |
| Applications:           | IF, IHC, WB   |
| Recommended Dilution:   | WB: 1-2µg/mL. IHC: 2µg/mL. Immunofluorescence start at 20µg/mL.   |
| Reactivity:             | Human   |
| Host:                   | Rabbit  |
| Isotype:                | IgG   |
| Clonality:              | Polyclonal  |
| Immunogen:              | TIM3 antibody was raised against a peptide corresponding to 16 amino acids near the amino terminus of human TIM3. The immunogen is located within amino acids 60 - 110 of TIM3. |
| Formulation:            | TIM3 Antibody is supplied in PBS containing 0.02% sodium azide.   |
| Concentration:          | 1 mg/ml   |
| Purification:           | TIM3 Antibody is affinity chromatography purified via peptide column.   |
| Conjugation:            | Unconjugated  |
| Storage:                | Store at -20°C as received.   |
| Stability:              | Stable for 12 months from date of receipt.  |
| Predicted Protein Size: | Predicted: 33 kDa; Observed: 37 kDa   |
| Gene Name:              | hepatitis A virus cellular receptor 2   |
| Database Link:          | <a href="#">NP_116171</a><br><a href="#">Entrez Gene 84868 Human</a><br><a href="#">Q8TDQ0</a>  |



[View online »](#)

**Background:**

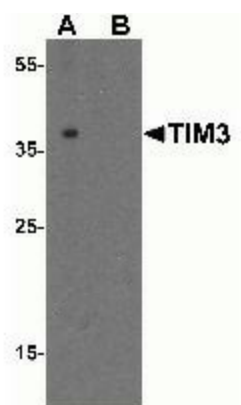
The immune checkpoint protein TIM3 is a member of the immunoglobulin superfamily and TIM family of proteins that was initially identified as a specific marker of fully differentiated IFN- $\gamma$  producing CD4 T helper 1 (Th1) and CD8 cytotoxic cells. It is a Th1-specific cell surface protein that regulates macrophage activation and negatively regulates Th1-mediated auto- and alloimmune responses, and is also highly expressed on regulatory T cells, monocytes, macrophages, and dendritic cells (1). TIM3 and PD-1 are co-expressed on most CD4 and CD8 T cells infiltrating solid tumors or in hematologic malignancy in mice; blocking TIM3 in conjugation with a PD-1 blockade increases the functionality of exhausted T cells and synergizes with to inhibit tumor growth (2,3).

**Synonyms:**

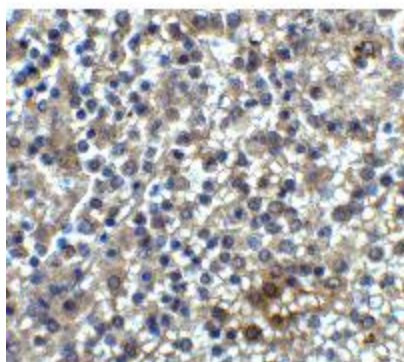
FLJ14428; HAVcr-2; KIM-3; Tim-3; TIM3; TIMD-3; TIMD3

**Note:**

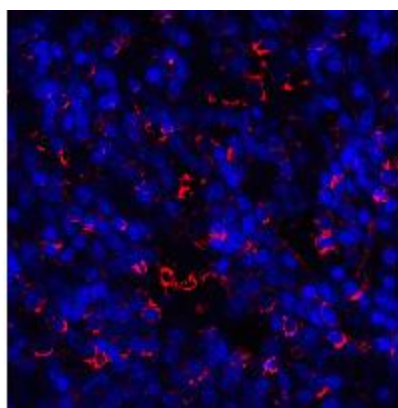
TIM3 antibody can be used for Western blot at 1 - 2  $\mu$ g/mL. Antibody can also be used for Immunohistochemistry at 2  $\mu$ g/mL. For Immunofluorescence start at 20  $\mu$ g/mL.

**Product images:**

Western blot analysis of TIM3 in Jurkat cell lysate with TIM3 antibody at 1  $\mu$ g/mL in (A) the absence and (B) the presence of blocking peptide.



Immunohistochemistry of TIM3 in human spleen tissue with TIM3 antibody at 2  $\mu$ g/ml.



Immunofluorescence of TIM3 in human spleen tissue with TIM3 antibody at 20 ug/ml.