

## Product datasheet for **TA355030**

### Lymphocyte Activation Gene 3 (LAG3) Rabbit Polyclonal Antibody

#### Product data:

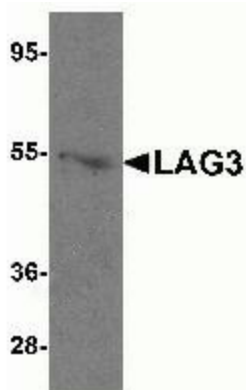
Product Type:	Primary Antibodies
Applications:	IF, IHC, WB
Recommended Dilution:	WB: 1-2µg/mL. IHC: 5µg/mL. Immunofluorescence start at 20µg/mL.
Reactivity:	Human, Mouse
Host:	Rabbit
Isotype:	IgG
Clonality:	Polyclonal
Immunogen:	LAG3 antibody was raised against a peptide corresponding to 18 amino acids near the amino terminus of human LAG3. The immunogen is located within amino acids 110 - 160 of LAG3.
Formulation:	LAG3 Antibody is supplied in PBS containing 0.02% sodium azide.
Concentration:	1 mg/ml
Purification:	LAG3 Antibody is affinity chromatography purified via peptide column.
Conjugation:	Unconjugated
Storage:	Store at -20°C as received.
Stability:	Stable for 12 months from date of receipt.
Predicted Protein Size:	Predicted: 55 kDa; Observed: 54 kDa
Gene Name:	lymphocyte activating 3
Database Link:	<a href="#">NP_002277</a> <a href="#">Entrez Gene 3902 Human</a> <a href="#">P18627</a>
Background:	The lymphocyte activation gene-3 (LAG3) is a member of the immunoglobulin superfamily and binds MHC class II with high affinity (1), negatively regulating T-cell function and homeostasis (2). It is expressed in B, T, and NK cells, monocytes, and dendritic cells (3), and acts to regulate T cell expansion (4). LAG3 is also an important immune checkpoint protein, with anti-LAG3 antibodies activating T effector cells and affecting regulatory T cell functions. Furthermore LAG3 appears to act in a synergistic fashion with PD-1/PD-L1, suggesting that a dual antibody approach may prove useful in cancer immunotherapy (5).
Synonyms:	CD223; FDC; LAG-3



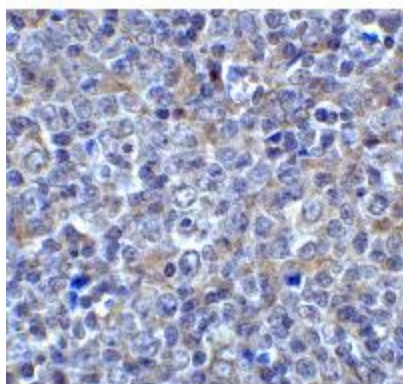
[View online »](#)

**Note:** LAG3 antibody can be used for Western blot at 1 - 2  $\mu\text{g}/\text{mL}$ . Antibody can also be used for Immunohistochemistry at 5  $\mu\text{g}/\text{mL}$ . For Immunofluorescence start at 20  $\mu\text{g}/\text{mL}$ .

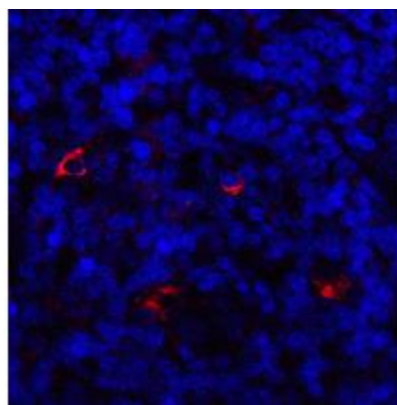
### Product images:



Western blot analysis of LAG3 in mouse liver tissue lysate with LAG3 antibody at 1  $\mu\text{g}/\text{ml}$  in (A) the absence and (B) the presence of blocking peptide.



Immunohistochemistry of LAG3 in human tonsil tissue with LAG3 antibody at 5  $\mu\text{g}/\text{ml}$ .



Immunofluorescence of LAG3 in human tonsil tissue with LAG3 antibody at 20  $\mu\text{g}/\text{ml}$ .