

Product datasheet for **TA355029**

C14orf151 (INF2) Rabbit Polyclonal Antibody

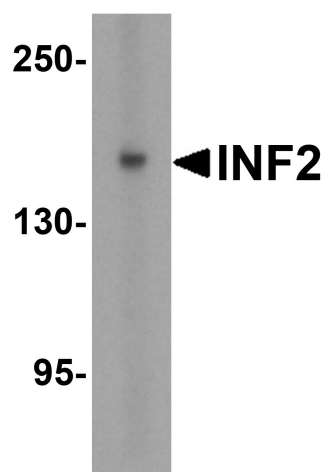
Product data:

Product Type:	Primary Antibodies
Applications:	WB
Recommended Dilution:	WB: 1-2µg/mL.
Reactivity:	Human
Host:	Rabbit
Isotype:	IgG
Clonality:	Polyclonal
Immunogen:	INF2 antibody was raised against a peptide corresponding to 14 amino acids near the amino terminus of human INF2.
Formulation:	INF2 Antibody is supplied in PBS containing 0.02% sodium azide.
Concentration:	1 mg/ml
Purification:	INF2 Antibody is affinity chromatography purified via peptide column.
Conjugation:	Unconjugated
Storage:	Store at -20°C as received.
Stability:	Stable for 12 months from date of receipt.
Predicted Protein Size:	Predicted: 137 kDa; Observed: 160 kDa
Gene Name:	inverted formin, FH2 and WH2 domain containing
Database Link:	NP_071934 Entrez Gene 64423 Human Q27J81
Background:	INF2 is a member of the formin family of proteins. It is considered a diaphanous formin due to the presence of a diaphanous inhibitory domain located at the N-terminus of the encoded protein. Studies of a similar mouse protein indicate that the protein encoded by this locus may function in polymerization and depolymerization of actin filaments. Mutations at this locus have been associated with focal segmental glomerulosclerosis 5
Synonyms:	C14orf151; C14orf173; DKFZp762A0214; FLJ22056; MGC13251; pp9484
Note:	INF2 antibody can be used for Western blot at 1 - 2 µg/mL.



[View online »](#)

Product images:



Western blot analysis of INF2 in (A) human tonsil and (B) rat stomach tissue lysate with INF2 antibody at 1 ug/ml.