

## Product datasheet for TA355025

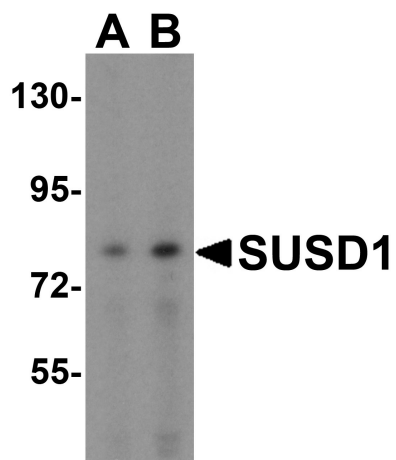
### SUSD1 Rabbit Polyclonal Antibody

#### Product data:

Product Type:	Primary Antibodies
Applications:	WB
Recommended Dilution:	WB: 1-2µg/mL.
Reactivity:	Human
Host:	Rabbit
Isotype:	IgG
Clonality:	Polyclonal
Immunogen:	SUSD1 antibody was raised against a peptide corresponding to 14 amino acids near the amino terminus of human SUSD1.
Formulation:	SUSD1 Antibody is supplied in PBS containing 0.02% sodium azide.
Concentration:	1 mg/ml
Purification:	SUSD1 Antibody is affinity chromatography purified via peptide column.
Conjugation:	Unconjugated
Storage:	Store at -20°C as received.
Stability:	Stable for 12 months from date of receipt.
Predicted Protein Size:	Predicted: 82 kDa; Observed: 82 kDa
Gene Name:	sushi domain containing 1
Database Link:	<a href="#">NP_071931</a> <a href="#">Entrez Gene 64420 Human</a> <a href="#">Q6UWL2</a>
Background:	Sushi domain-containing protein 1 (SUSD1) contains a number of Complement control protein (CCP) modules, or short consensus repeats (SCR) , also known as Sushi domains. These domains are known to exist in a wide variety of complement and adhesion proteins, suggesting that this protein may play a role in complement system of the immune system.
Synonyms:	DKFZP761E1824; RP11-4O1.1
Note:	SUSD1 antibody can be used for Western blot at 1 - 2 µg/mL.


[View online »](#)

Product images:



Western blot analysis of SUSD1 in 293 cell lysate with SUSD1 antibody at (A) 0.5 and (B) 1  $\mu$ g/ml.