

Product datasheet for **TA355024**

RNF26 Rabbit Polyclonal Antibody

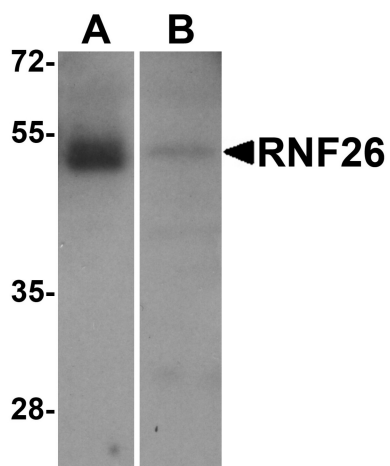
Product data:

Product Type:	Primary Antibodies
Applications:	WB
Recommended Dilution:	WB: 1-2µg/mL.
Reactivity:	Human, Rat
Host:	Rabbit
Isotype:	IgG
Clonality:	Polyclonal
Immunogen:	RNF26 antibody was raised against a peptide corresponding to 14 amino acids near the amino terminus of human RNF26.
Formulation:	RNF26 Antibody is supplied in PBS containing 0.02% sodium azide.
Concentration:	1 mg/ml
Purification:	RNF26 Antibody is affinity chromatography purified via peptide column.
Conjugation:	Unconjugated
Storage:	Store at -20°C as received.
Stability:	Stable for 12 months from date of receipt.
Predicted Protein Size:	Predicted: 48 kDa; Observed: 50 kDa
Gene Name:	ring finger protein 26
Database Link:	NP_114404 Entrez Gene 79102 Human Q9BY78
Background:	RNF26 Antibody: RNF26 was identified as a member of a novel C3HC5 ring finger subfamily (1). RNF26 is ubiquitously expressed in human tissues but has been found to be upregulated in several cancer cell lines including HL-60, HeLa S3, and SW480, as well as 50% of primary gastric cancers. While the substrates of RNF26 ubiquitination have not yet been identified, the upregulation of RNF26 in several types of cancer suggest that it may serve as a target for therapeutic treatment (1).
Synonyms:	MGC2642


[View online »](#)

Note: RNF26 antibody can be used for Western blot at 1 - 2 $\mu\text{g/mL}$.

Product images:



Western blot analysis of RNF26 in (A) human tonsil and (B) rat stomach tissue lysate with RNF26 antibody at 1 $\mu\text{g/mL}$.