

Product datasheet for **TA355020**

Pea3 (ETV4) Rabbit Polyclonal Antibody

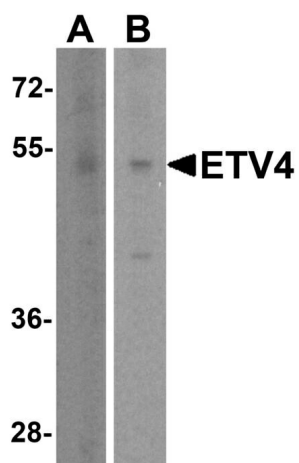
Product data:

Product Type:	Primary Antibodies
Applications:	WB
Recommended Dilution:	WB: 1-2µg/mL.
Reactivity:	Human, Mouse, Rat
Host:	Rabbit
Isotype:	IgG
Clonality:	Polyclonal
Immunogen:	ETV4 antibody was raised against a peptide corresponding to 19 amino acids near the amino terminus of human ETV4.
Formulation:	ETV4 Antibody is supplied in PBS containing 0.02% sodium azide.
Concentration:	1 mg/ml
Purification:	ETV4 Antibody is affinity chromatography purified via peptide column.
Conjugation:	Unconjugated
Storage:	Store at -20°C as received.
Stability:	Stable for 12 months from date of receipt.
Predicted Protein Size:	Predicted: 53 kDa; Observed: 53 kDa
Gene Name:	ETS variant 4
Database Link:	NP_001977 Entrez Gene 2118 Human P43268
Background:	ETV4 Antibody: ETV4, along with the related proteins ETV1 and ETV5, form the PEA3 subfamily of the E26 transformation-specific (ETS) transcription factor family (1). ETV4 is thought to play roles in embryonic kidney development and fertility (2,3), and is also thought to be an oncoprotein in multiple cancers (4).
Synonyms:	E1A-F; E1AF; PEA3; PEAS3
Note:	ETV4 antibody can be used for Western blot at 1 - 2 µg/mL.



[View online »](#)

Product images:



Western blot analysis of ETV4 in (A) human brain tissue lysate and (B) A431 cell lysate with ETV4 antibody at 1 ug/ml.