

Product datasheet for **TA355018**

Zinc transporter 8 (SLC30A8) Rabbit Polyclonal Antibody

Product data:

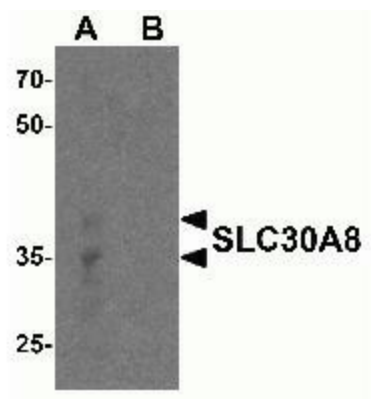
Product Type:	Primary Antibodies
Applications:	IF, IHC, WB
Recommended Dilution:	WB: 1-2µg/mL.
Reactivity:	Human
Host:	Rabbit
Isotype:	IgG
Clonality:	Polyclonal
Immunogen:	SLC30A8 antibody was raised against a peptide corresponding to 14 amino acids near the amino terminus of human SLC30A8.
Formulation:	SLC30A8 Antibody is supplied in PBS containing 0.02% sodium azide.
Concentration:	1 mg/ml
Purification:	SLC30A8 Antibody is affinity chromatography purified via peptide column.
Conjugation:	Unconjugated
Storage:	Store at -20°C as received.
Stability:	Stable for 12 months from date of receipt.
Predicted Protein Size:	Predicted: 35, 41 kDa; Observed: 35, 41 kDa
Gene Name:	solute carrier family 30 member 8
Database Link:	NP_776250 Entrez Gene 169026 Human Q8IWU4
Background:	SLC30A8 Antibody: SLC30A8 is a zinc efflux transporter involved in the accumulation of zinc in intracellular vesicles and is expressed at a high level in the pancreas, particularly in islets of Langerhans, and co-localizes with insulin in the secretory pathway granules of the insulin-secreting INS-1 cells (1). Allelic variants of SLC30A8 have been identified as major genetic risk factors for the development of Type 2 diabetes (2), but no genetic association has been found with Type 1 diabetes (3). SLC30A8 expression in β -cells was found to be influenced by cytokine expression, particularly IFN-gamma and IL-1beta (4).
Synonyms:	ZnT-8; ZNT8



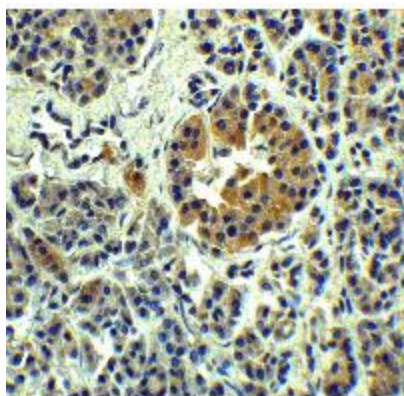
[View online »](#)

Note: SLC30A8 antibody can be used for Western blot at 1 - 2 $\mu\text{g}/\text{mL}$.

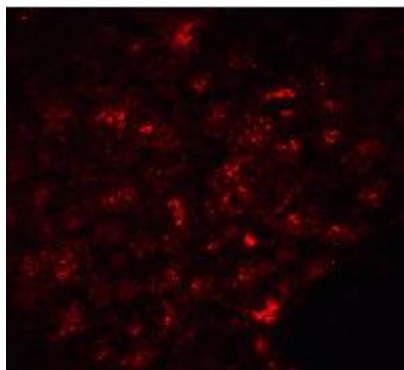
Product images:



Western blot analysis of SLC30A8 in human pancreas tissue lysate with SLC30A8 antibody at 1 $\mu\text{g}/\text{ml}$ in (A) the absence and (B) the presence of blocking peptide



Immunohistochemistry of SLC30A8 in human pancreas tissue with SLC30A8 Antibody at 5 $\mu\text{g}/\text{ml}$.



Immunofluorescence of SLC30A8 in human pancreas tissue with SLC30A8 Antibody at 20 $\mu\text{g}/\text{ml}$.