

Product datasheet for **TA355017**

SOX10 Rabbit Polyclonal Antibody

Product data:

Product Type:	Primary Antibodies
Applications:	IF, IHC, WB
Recommended Dilution:	WB: 1-2µg/mL.
Reactivity:	Human, Mouse, Rat
Host:	Rabbit
Isotype:	IgG
Clonality:	Polyclonal
Immunogen:	SOX10 antibody was raised against a peptide corresponding to 18 amino acids near the amino terminus of human SOX10.
Formulation:	SOX10 Antibody is supplied in PBS containing 0.02% sodium azide.
Concentration:	1 mg/ml
Purification:	SOX10 Antibody is affinity chromatography purified via peptide column.
Conjugation:	Unconjugated
Storage:	Store at -20°C as received.
Stability:	Stable for 12 months from date of receipt.
Predicted Protein Size:	Predicted: 51 kDa; Observed: 54 kDa
Gene Name:	SRY-box 10
Database Link:	NP_008872 Entrez Gene 6663 Human P56693
Background:	SOX10 Antibody: SOX10 is a member of the SOX (SRY-related HMG-box) family of transcription factors involved in the regulation of embryonic development and the determination of the cell fate (1). The encoded protein may act as a transcriptional activator after forming a protein complex with other proteins (2). This protein acts as a nucleocytoplasmic shuttle protein and is important for neural crest and peripheral nervous system development (2). Mutations in this gene are associated with Waardenburg-Shah and Waardenburg-Hirschprung disease (3). SLC30A8 expression in beta-cells was found to be influenced by cytokine expression, particularly IFN-gamma and IL-1beta (4).

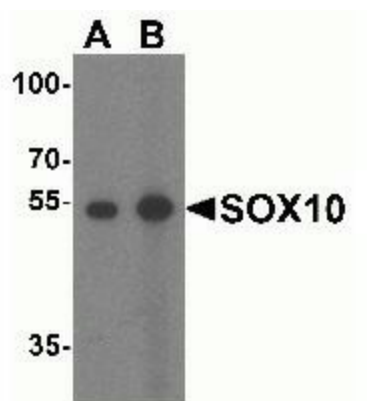


[View online »](#)

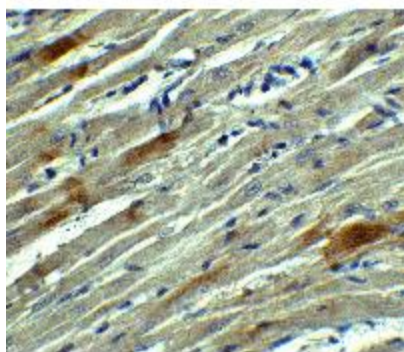
Synonyms: DOM; MGC15649; OTTHUMP00000195094; WS2E; WS4

Note: SOX10 antibody can be used for Western blot at 1 - 2 $\mu\text{g}/\text{mL}$.

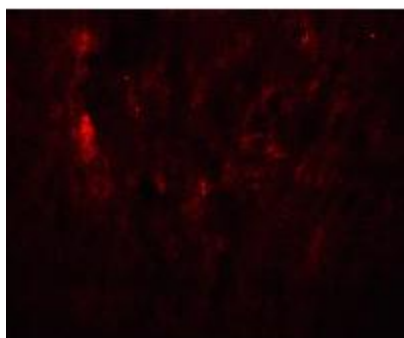
Product images:



Western blot analysis of SOX10 in rat heart tissue lysate with SOX10 antibody at (A) 1 and (B) 2 $\mu\text{g}/\text{mL}$.



Immunohistochemistry of SOX10 in rat heart tissue with SOX10 Antibody at 5 $\mu\text{g}/\text{mL}$.



Immunofluorescence of SOX10 in rat heart tissue with SOX10 Antibody at 20 $\mu\text{g}/\text{mL}$.