

Product datasheet for **TA355016**

SUSD3 Rabbit Polyclonal Antibody

Product data:

Product Type:	Primary Antibodies
Applications:	IF, WB
Recommended Dilution:	WB: 1-2µg/mL.IHC starting at 5µg/mL.
Reactivity:	Human, Mouse
Host:	Rabbit
Isotype:	IgG
Clonality:	Polyclonal
Immunogen:	SUSD3 antibody was raised against a 16 amino acid peptide from near the center of human SUSD3. The immunogen is located within amino acids 120 - 170 of SUSD3.
Formulation:	SUSD3 Antibody is supplied in PBS containing 0.02% sodium azide.
Concentration:	1 mg/ml
Purification:	SUSD3 Antibody is affinity chromatography purified via peptide column.
Conjugation:	Unconjugated
Storage:	Store at -20°C as received.
Stability:	Stable for 12 months from date of receipt.
Predicted Protein Size:	Predicted: 16, 22, 23, 28 kDa; Observed: 23 kDa
Gene Name:	sushi domain containing 3
Database Link:	NP_659443 Entrez Gene 203328 Human Q96L08
Background:	Little is known of the function of the sushi domain containing 3 protein (SUSD3), but its expression has been reported in estrogen receptor-alpha (ERalpha)-positive breast tumors with decreased expression reported in aggressive malignant tumors (1,2). Recently, SUSD3 has been found to promote estrogen-dependent cell proliferation and may regulate cell-cell and cell-substrate interactions and migration in breast cancer (3). Furthermore, elevated SUSD3 mRNA levels were observed in aromatase inhibitor-responsive breast tumors, suggesting that it may also serve as a novel predictor of response to endocrine therapy and a potential therapeutic target (3).

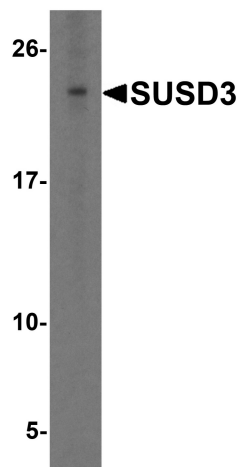


[View online »](#)

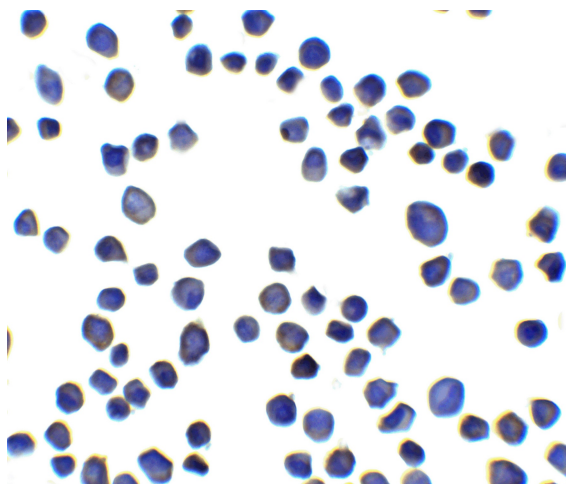
Synonyms: MGC26847

Note: SUSD3 antibody can be used for the detection of SUSD3 by Western blot at 1 - 2 µg/mL. Antibody can also be used for immunocytochemistry starting at 5 µg/mL.

Product images:



Western blot analysis of SUSD3 in HeLa cell lysate with SUSD3 antibody at 1ug/ml.



Immunocytochemistry of SUSD3 in 3T3 cells with SUSD3 antibody at 5ug/ml.