

Product datasheet for **TA355015**

AKAIN1 Rabbit Polyclonal Antibody

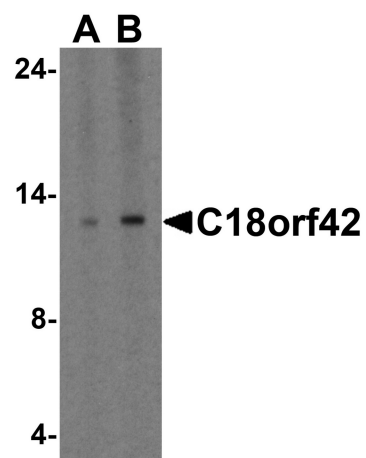
Product data:

Product Type:	Primary Antibodies
Applications:	IF, WB
Recommended Dilution:	WB: 1-2µg/mL.IHC starting at 2µg/mL. IF start at 2µg/mL.
Reactivity:	Human
Host:	Rabbit
Isotype:	IgG
Clonality:	Polyclonal
Immunogen:	C18orf42 antibody was raised against a 16 amino acid peptide from near the center of human C18orf42. The immunogen is located within the last 50 amino acids of C18orf42.
Formulation:	C18orf42 Antibody is supplied in PBS containing 0.02% sodium azide.
Concentration:	1 mg/ml
Purification:	C18orf42 Antibody is affinity chromatography purified via peptide column.
Conjugation:	Unconjugated
Storage:	Store at -20°C as received.
Stability:	Stable for 12 months from date of receipt.
Predicted Protein Size:	Predicted: 8 kDa; Observed: 12 kDa
Gene Name:	A kinase (PRKA) anchor inhibitor 1
Database Link:	NP_001138666 Entrez Gene 642597 Human POCW23
Background:	Little is known of the function of the protein encoded by Chromosome 18 open reading frame 18 (C18orf42), but it is preferentially expressed in neuronal tissue (1). It is thought to bind to the cAMP-dependent protein kinase A (PKA) and regulation its interaction with members of the A-kinase anchoring protein (AKAP) family (1).
Note:	C18orf42 antibody can be used for the detection of C18orf42 by Western blot at 1 - 2 µg/mL. Antibody can also be used for Immunocytochemistry starting at 2 µg/mL. For immunofluorescence start at 2 µg/mL.

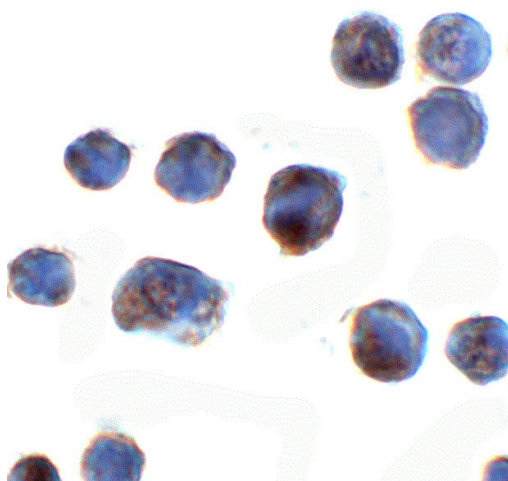


[View online »](#)

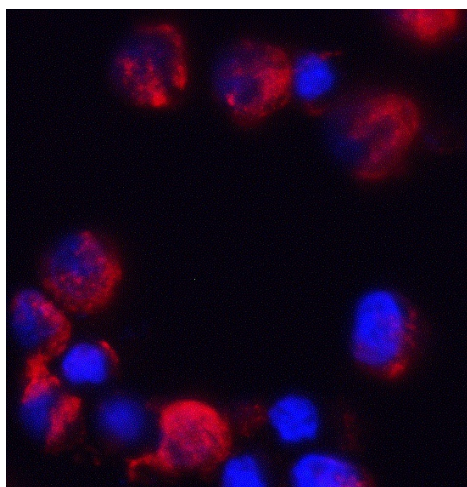
Product images:



Western blot analysis of C18orf42 in HeLa cell lysate with C18orf42 antibody at 1ug/ml.



Immunofluorescence of C18orf42 in HeLa cells with C18orf42 antibody at 2ug/ml.



Immunocytochemistry of C18orf42 in HeLa cells with C18orf42 antibody at 2ug/ml.