

Product datasheet for TA355012

SRPK1 Rabbit Polyclonal Antibody

Product data:

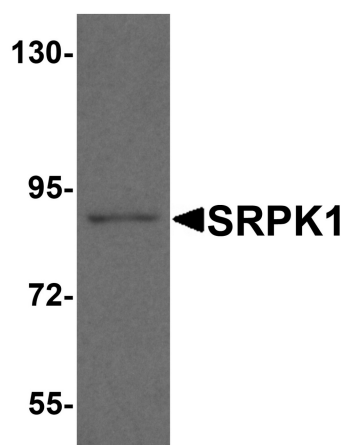
Product Type:	Primary Antibodies
Applications:	IHC, WB
Recommended Dilution:	WB: 1-2µg/mL.IHC: 5µg/ml.
Reactivity:	Human, Mouse, Rat
Host:	Rabbit
Isotype:	IgG
Clonality:	Polyclonal
Immunogen:	SRPK1 antibody was raised against a 19 amino acid peptide from near the amino terminus of human SRPK1. The immunogen is located within the first 50 amino acids of SRPK1.
Formulation:	SRPK1 Antibody is supplied in PBS containing 0.02% sodium azide.
Concentration:	1 mg/ml
Purification:	SRPK1 Antibody is affinity chromatography purified via peptide column.
Conjugation:	Unconjugated
Storage:	Store at -20°C as received.
Stability:	Stable for 12 months from date of receipt.
Predicted Protein Size:	Predicted: 54, 72, 91 kDa; Observed: 91 kDa
Gene Name:	SRSF protein kinase 1
Database Link:	NP_003128 Entrez Gene 6732 Human Q96SB4
Background:	SRPK1 and SRPK2, two Arginine/serine-rich (SR) protein-specific kinases constitute control circuits to regulate both constitutive and alternative pre-mRNA splicing and coordinate splicing with transcription in cells (1). They are highly specific for the phosphorylation of these RS proteins, and highly expressed in testis (1,2). SRPK1 plays a role in the condensation of sperm chromatin and controls the intranuclear distribution of splicing factors in interphase cells and the reorganization of nuclear speckles during mitosis (3,4).
Synonyms:	SFRSK1



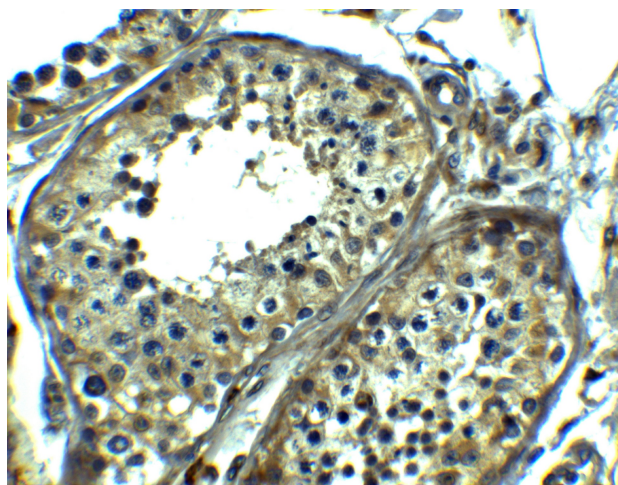
[View online »](#)

Note: SRPK1 antibody can be used for the detection of SRPK1 by Western blot at 1 - 2 $\mu\text{g}/\text{mL}$. Antibody can also be used for immunohistochemistry at 5 $\mu\text{g}/\text{mL}$.

Product images:



Western blot analysis of SRPK1 in mouse heart tissue lysate with SRPK1 antibody at 1 $\mu\text{g}/\text{mL}$.



Immunohistochemistry of SRPK1 in human testis tissue with SRPK1 antibody at 5 $\mu\text{g}/\text{mL}$.