

## Product datasheet for **TA355010**

### CHADL Rabbit Polyclonal Antibody

#### Product data:

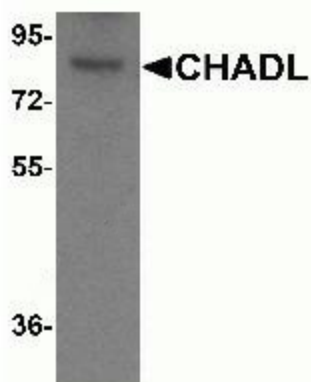
Product Type:	Primary Antibodies
Applications:	IF, IHC, WB
Recommended Dilution:	WB: 1-2µg/mL. IHC starting at 5µg/mL.
Reactivity:	Human, Mouse, Rat
Host:	Rabbit
Isotype:	IgG
Clonality:	Polyclonal
Immunogen:	CHADL antibody was raised against a 19 amino acid peptide from near the carboxy terminus of human CHADL. The immunogen is located within the last 50 amino acids of CHADL.
Formulation:	CHADL Antibody is supplied in PBS containing 0.02% sodium azide.
Concentration:	1 mg/ml
Purification:	CHADL Antibody is affinity chromatography purified via peptide column.
Conjugation:	Unconjugated
Storage:	Store at -20°C as received.
Stability:	Stable for 12 months from date of receipt.
Predicted Protein Size:	Predicted: 84 kDa; Observed: 86 kDa
Gene Name:	chondroadherin like
Database Link:	<a href="#">NP_612490</a> <a href="#">Entrez Gene 150356 Human</a> <a href="#">Q6NUI6</a>
Background:	The Chondroadherin-like (CHADL) protein, also known as SLRR4B, is homologous to the Chondroadherin protein and is expressed cartilaginous tissues (1). Like Chondroadherin, CHADL belongs to the small leucine-rich proteoglycan (SLRP) family and class IV subfamily and plays a significant role in the regulation of chondrocyte growth and proliferation (1,2). CHADL is thought to play a negative regulatory role in collagen fibrillogenesis and chondrocyte differentiation (1).
Synonyms:	chondroadherin-like; SLRR4B



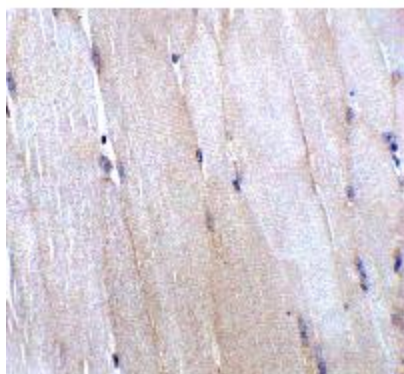
[View online »](#)

**Note:** CHADL antibody can be used for the detection of CHADL by Western blot at 1 - 2  $\mu\text{g}/\text{mL}$ . Antibody can also be used for Immunohistochemistry starting at 5  $\mu\text{g}/\text{mL}$ .

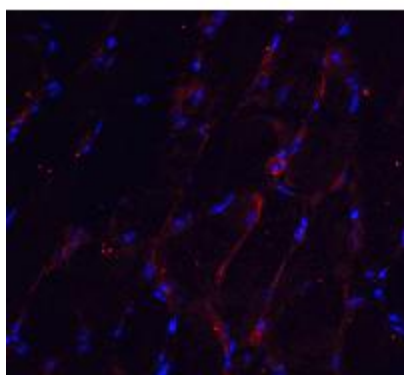
**Product images:**



Western blot analysis of CHADL in mouse kidney tissue lysate with CHADL antibody at (A) 1 and (B) 2  $\mu\text{g}/\text{ml}$ .



Immunohistochemistry of CHADL in mouse skeletal muscle tissue with CHADL antibody at 5  $\mu\text{g}/\text{ml}$ .



Immunofluorescence of CHADL in mouse skeletal muscle tissue with CHADL antibody at 20  $\mu\text{g}/\text{ml}$ .