

## Product datasheet for **TA355009**

### CHAD Rabbit Polyclonal Antibody

#### Product data:

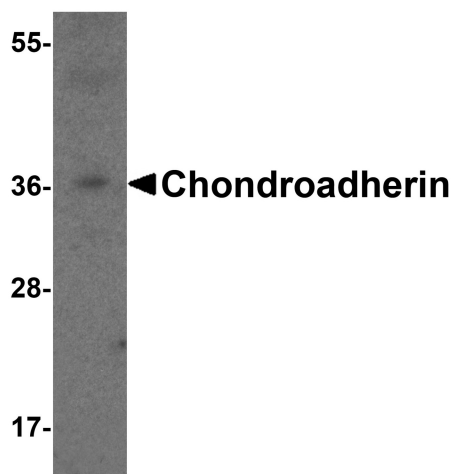
Product Type:	Primary Antibodies
Applications:	IF, WB
Recommended Dilution:	WB: 1-2µg/ml.IHC starting at 5µg/mL.
Reactivity:	Human, Mouse, Rat
Host:	Rabbit
Isotype:	IgG
Clonality:	Polyclonal
Immunogen:	Chondroadherin antibody was raised against a 17 amino acid peptide near the carboxy terminus of human Chondroadherin. The immunogen is located within the last 50 amino acids of Chondroadherin.
Formulation:	Chondroadherin antibody is supplied in PBS containing 0.02% sodium azide.
Concentration:	1 mg/ml
Purification:	Chondroadherin antibody is affinity chromatography purified via peptide column.
Conjugation:	Unconjugated
Storage:	Store at -20°C as received.
Stability:	Stable for 12 months from date of receipt.
Predicted Protein Size:	Predicted: 38 kDa; Observed: 36 kDa
Gene Name:	chondroadherin
Database Link:	<a href="#">NP_001258</a> <a href="#">Entrez Gene 1101 Human</a> <a href="#">O15335</a>
Background:	Chondroadherin, also known as CHAD or SLRR4A, belongs to the small leucine-rich proteoglycan (SLRP) family and class IV subfamily and plays a significant role in the regulation of chondrocyte growth and proliferation (1,2). It localizes to the extracellular matrix and contains nine tandem leucine repeats as well as N-terminal and C-terminal leucine rich domains (2-4). Chondroadherin is implicated in the adhesion of fibroblasts, osteoblasts and chondrocytes, which is mediated by interactions with Integrin alpha2 beta1 (2,4,5).
Synonyms:	chondroadherin; SLRR4A



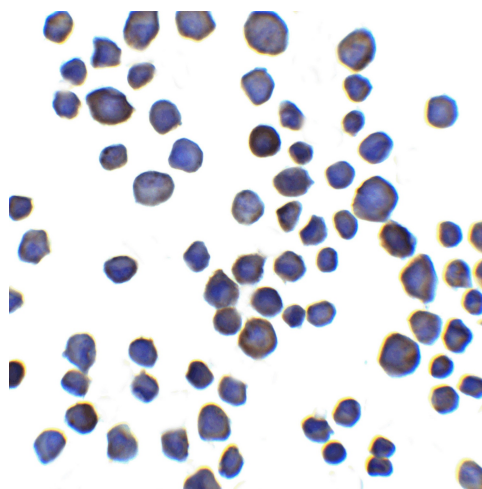
[View online »](#)

**Note:** Chondroadherin antibody can be used for detection of Chondroadherin by Western blot at 1 - 2  $\mu\text{g}/\text{ml}$ . Antibody can also be used for immunocytochemistry starting at 5  $\mu\text{g}/\text{mL}$ .

**Product images:**



Western blot analysis of Chondroadherin in 3T3 cell lysate with Chondroadherin antibody at 1  $\mu\text{g}/\text{ml}$ .



Immunocytochemistry of Chondroadherin in 3T3 cells with Chondroadherin antibody at 5  $\mu\text{g}/\text{ml}$ .