

Product datasheet for **TA355007**

BTF (BCLAF1) Rabbit Polyclonal Antibody

Product data:

Product Type:	Primary Antibodies
Applications:	IHC, WB
Recommended Dilution:	WB: 0.5-1µg/ml.IHC starting at 5µg/mL.
Reactivity:	Human, Mouse, Rat
Host:	Rabbit
Isotype:	IgG
Clonality:	Polyclonal
Immunogen:	BCLAF1 antibody was raised against a 19 amino acid peptide near the carboxy terminus of human BCLAF1. The immunogen is located within amino acids 820 - 870 of BCLAF1.
Formulation:	BCLAF1 antibody is supplied in PBS containing 0.02% sodium azide.
Concentration:	1 mg/ml
Purification:	BCLAF1 antibody is affinity chromatography purified via peptide column.
Conjugation:	Unconjugated
Storage:	Store at -20°C as received.
Stability:	Stable for 12 months from date of receipt.
Predicted Protein Size:	Predicted: 101 kDa; Observed: 105 kDa
Gene Name:	BCL2 associated transcription factor 1
Database Link:	NP_055554 Entrez Gene 9774 Human Q9NYF8
Background:	The BCL2-associated transcription factor 1 (BCLAF1) is a transcriptional repressor that interacts with several members of the BCL2 family of proteins. Overexpression of this protein induces apoptosis, which can be suppressed by co-expression of BCL2 proteins (1). BCLAF1 localizes to dot-like structures throughout the nucleus, and redistributes to a zone near the nuclear envelope in cells undergoing apoptosis. (2). More recent studies have suggested BCLAF1 plays roles in processes not associated with actions of the BCL2 family members, including lung development, T cell activation, and post-transcriptional processes that affect mRNA metabolism (3).

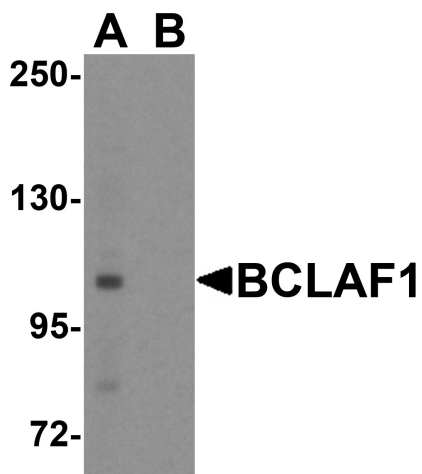


[View online »](#)

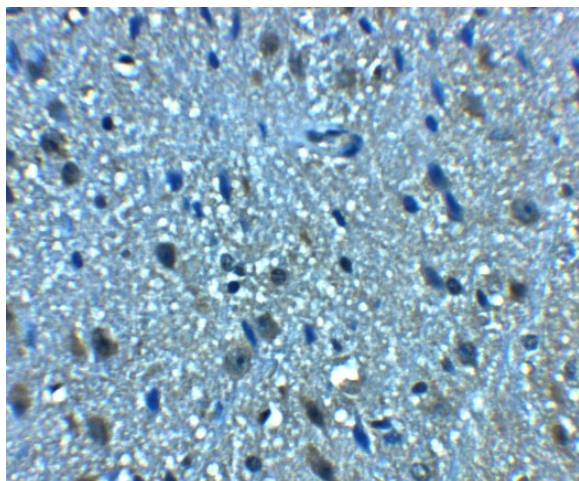
Synonyms: bK211L9.1; BTF; KIAA0164

Note: BCLAF1 antibody can be used for detection of BCLAF1 by Western blot at 0.5 - 1 $\mu\text{g/ml}$. Antibody can also be used for immunohistochemistry starting at 5 $\mu\text{g/mL}$.

Product images:



Western blot analysis of BCLAF1 in human brain tissue lysate with BCLAF1 antibody at 1 $\mu\text{g/ml}$.



Immunohistochemistry of BCLAF1 in mouse brain tissue with BCLAF1 antibody at 5 $\mu\text{g/ml}$.