

## Product datasheet for **TA355005**

### DIS3L2 Rabbit Polyclonal Antibody

#### Product data:

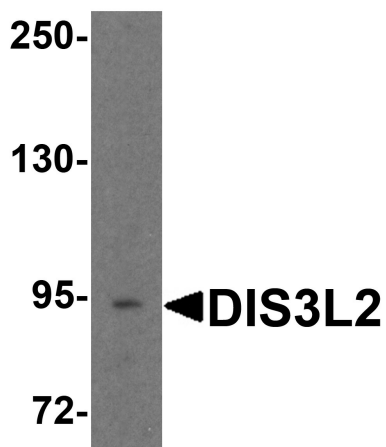
Product Type:	Primary Antibodies
Applications:	IHC, WB
Recommended Dilution:	WB: 1-2µg/ml.IHC starting at 5µg/mL.
Reactivity:	Human, Mouse, Rat
Host:	Rabbit
Isotype:	IgG
Clonality:	Polyclonal
Immunogen:	DIS3L2 antibody was raised against a 17 amino acid peptide near the carboxy terminus of human DIS3L2. The immunogen is located within amino acids 720 - 770 of DIS3L2.
Formulation:	DIS3L2 antibody is supplied in PBS containing 0.02% sodium azide.
Concentration:	1 mg/ml
Purification:	DIS3L2 antibody is affinity chromatography purified via peptide column.
Conjugation:	Unconjugated
Storage:	Store at -20°C as received.
Stability:	Stable for 12 months from date of receipt.
Predicted Protein Size:	Predicted: 97 kDa; Observed: 94 kDa
Gene Name:	DIS3 like 3'-5' exoribonuclease 2
Database Link:	<a href="#">NP_689596</a> <a href="#">Entrez Gene 129563 Human</a> <a href="#">Q8IYB7</a>
Background:	The exosome is involved in a multitude of cellular RNA processing and degradation events (1). DIS3, also known as exosome complex exonuclease RRP44, is a ribonuclease that acts directly in the processing, turnover, and surveillance of a large number of distinct RNA species (2). DIS3L2 is a paralog of DIS3, but unlike DIS3 is located in the cytoplasm (3). DIS3L2 defines a novel eukaryotic RNA degradation pathway and preferentially targets uridylylated RNA (4). DIS3L2 mutations have also been associated with sporadic Wilms tumors (3).
Synonyms:	FAM6A; FLJ36974; MGC42174; OTTHUMP00000203808



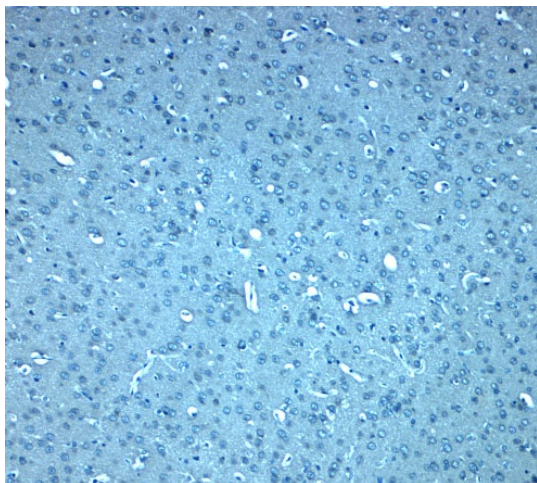
[View online »](#)

**Note:** DIS3L2 antibody can be used for detection of DIS3L2 by Western blot at 1 - 2  $\mu\text{g}/\text{ml}$ . Antibody can also be used for immunohistochemistry starting at 5  $\mu\text{g}/\text{mL}$ .

**Product images:**



Western blot analysis of DIS3L2 in 3T3 cell lysate with DIS3L2 antibody at 1  $\mu\text{g}/\text{ml}$ .



Immunohistochemistry of DIS3L2 in rat brain tissue with DIS3L2 antibody at 5  $\mu\text{g}/\text{ml}$ .