

Product datasheet for **TA355004**

SLC36A2 Rabbit Polyclonal Antibody

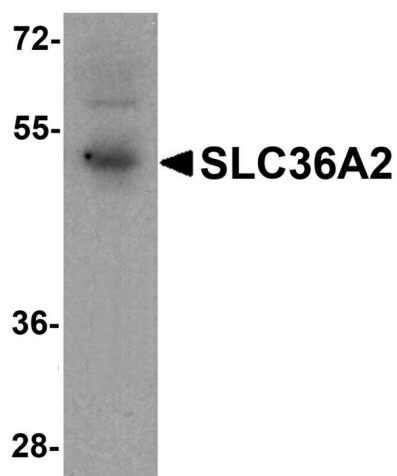
Product data:

Product Type:	Primary Antibodies
Applications:	WB
Recommended Dilution:	WB: 1-2µg/ml.
Reactivity:	Human
Host:	Rabbit
Isotype:	IgG
Clonality:	Polyclonal
Immunogen:	SLC36A2 antibody was raised against a 15 amino acid peptide near the amino terminus of human SLC36A2. The immunogen is located within amino acids 30 - 80 of SLC36A2.
Formulation:	SLC36A2 antibody is supplied in PBS containing 0.02% sodium azide.
Concentration:	1 mg/ml
Purification:	SLC36A2 antibody is affinity chromatography purified via peptide column.
Conjugation:	Unconjugated
Storage:	Store at -20°C as received.
Stability:	Stable for 12 months from date of receipt.
Predicted Protein Size:	Predicted: 53 kDa; Observed: 52 kDa
Gene Name:	solute carrier family 36 member 2
Database Link:	NP_861441 Entrez Gene 153201 Human Q495M3
Background:	SLC36A2 is a pH-dependent proton-coupled amino acid transporter that belongs to the amino acid auxin permease 1 protein family. The encoded protein primarily transports small amino acids such as glycine, alanine and proline (1,2). Both SLC36A2 and its paralog SLC36A1 are expressed in neurons, but SLC36A2 localizes to the endoplasmic reticulum and recycling endosome, while SLC36A1 is expressed in the lysosome (2). SLC36A2 is thought to contribute to neuronal transport and sequestration of amino acids such as glycine, alanine, and proline (2). Mutations in this gene are associated with iminoglycinuria and hyperglycinuria (3).
Synonyms:	FLJ16051; MGC119658; MGC119660; PAT2; TRAMD1; tramdorin; Tramdorin-1


[View online »](#)

Note: SLC36A2 antibody can be used for detection of SLC36A2 by Western blot at 1 - 2 μ g/ml.

Product images:



Western blot analysis of SLC36A2 in human stomach tissue lysate with SLC36A2 antibody at 1ug/ml.