

## Product datasheet for **TA355003**

### Caveolin 1 (CAV1) Rabbit Polyclonal Antibody

#### Product data:

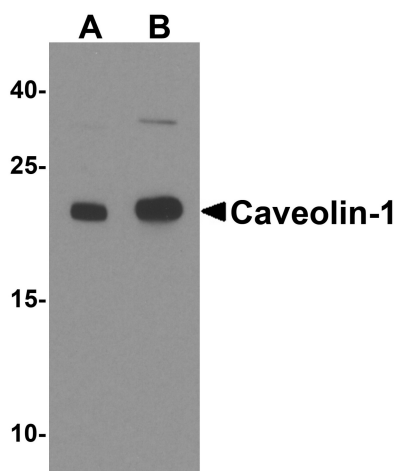
Product Type:	Primary Antibodies
Applications:	WB
Recommended Dilution:	WB: 1-2µg/ml.
Reactivity:	Human, Mouse, Rat
Host:	Rabbit
Isotype:	IgG
Clonality:	Polyclonal
Immunogen:	Caveolin-1 antibody was raised against a peptide corresponding to 18 amino acids near the amino terminus of human Caveolin-1.
Formulation:	Caveolin-1 Antibody is supplied in PBS containing 0.02% sodium azide.
Concentration:	1 mg/ml
Purification:	Caveolin-1 Antibody is affinity chromatography purified via peptide column.
Conjugation:	Unconjugated
Storage:	Store at -20°C as received.
Stability:	Stable for 12 months from date of receipt.
Predicted Protein Size:	Predicted: 20 kDa; Observed: 21 kDa
Gene Name:	caveolin 1
Database Link:	<a href="#">NP_001744</a> <a href="#">Entrez Gene 857 Human</a> <a href="#">Q03135</a>
Background:	Caveolin-1 Antibody: Caveolin-1 is a scaffolding protein that is the main component of the caveolae plasma membranes found in most cell types (1). The protein links integrin subunits to the tyrosine kinase FYN, an initiating step in coupling integrins to the Ras-ERK pathway and promoting cell cycle progression (2). The gene is a tumor suppressor gene candidate and a negative regulator of the Ras-p42/44 mitogen-activated kinase cascade (3). Mutations in this gene have been associated with Berardinelli-Seip congenital lipodystrophy (4).
Synonyms:	BSCL3; CAV; CGL3; MSTP085; VIP21



[View online »](#)

Note: Caveolin-1 antibody can be used for detection of Caveolin-1 by Western blot at 1 - 2  $\mu\text{g}/\text{ml}$ .

**Product images:**



Western blot analysis of Caveolin-1 in human lung tissue lysate with Caveolin-1 antibody at (A) 1 and (B) 2  $\mu\text{g}/\text{mL}$ .