

## Product datasheet for **TA355002**

### **SAMHD1 Rabbit Polyclonal Antibody**

#### **Product data:**

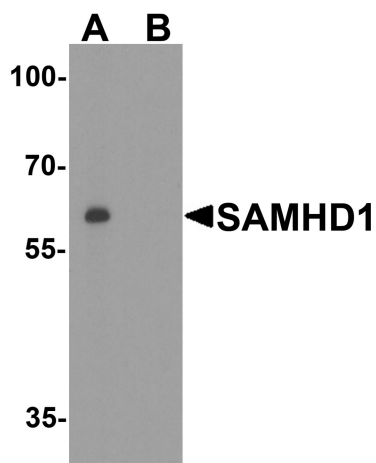
<b>Product Type:</b>	Primary Antibodies
<b>Applications:</b>	IF, IHC, WB
<b>Recommended Dilution:</b>	WB: 1-2µg/ml. IHC starting at 5µg/mL. IF start at 20µg/mL.
<b>Reactivity:</b>	Human, Mouse
<b>Host:</b>	Rabbit
<b>Isotype:</b>	IgG
<b>Clonality:</b>	Polyclonal
<b>Immunogen:</b>	SAMHD1 antibody was raised against an 18 amino acid peptide near the carboxy terminus of human SAMHD1.
<b>Formulation:</b>	SAMHD1 antibody is supplied in PBS containing 0.02% sodium azide.
<b>Concentration:</b>	1 mg/ml
<b>Purification:</b>	SAMHD1 antibody is affinity chromatography purified via peptide column.
<b>Conjugation:</b>	Unconjugated
<b>Storage:</b>	Store at -20°C as received.
<b>Stability:</b>	Stable for 12 months from date of receipt.
<b>Predicted Protein Size:</b>	Predicted: 65, 69 kDa; Observed: 62 kDa
<b>Gene Name:</b>	SAM and HD domain containing deoxynucleoside triphosphate triphosphohydrolase 1
<b>Database Link:</b>	<a href="#">NP_056289</a> <a href="#">Entrez Gene 25939 Human</a> <a href="#">Q9Y3Z3</a>
<b>Background:</b>	The SAM domain and HD domain 1 (SAMHD1) protein is upregulated in response to viral infection and is thought to play a role in innate immunity (1). SAMHD1 blocks the infection of HIV-1 and SIVdeltaVpx before reverse transcription in macrophages and dendritic cells (2), and this restriction is regulated by phosphorylation of SAMHD1 (3). Mutations in this gene have been associated with Aicardi-Goutieres syndrome (1).
<b>Synonyms:</b>	AGS5; DCIP; HDDC1; Mg11; MOP-5; MOP5; SBBI88



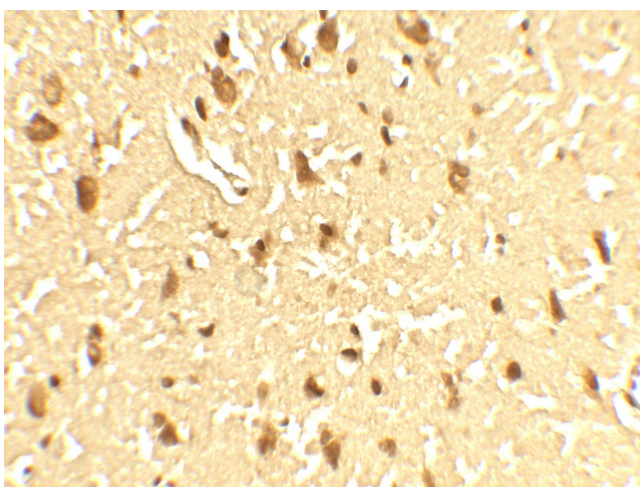
[View online »](#)

**Note:** SAMHD1 antibody can be used for detection of SAMHD1 by Western blot at 1 - 2  $\mu\text{g/ml}$ . Antibody can also be used for Immunohistochemistry starting at 5  $\mu\text{g/ml}$ . For immunofluorescence start at 20  $\mu\text{g/ml}$ .

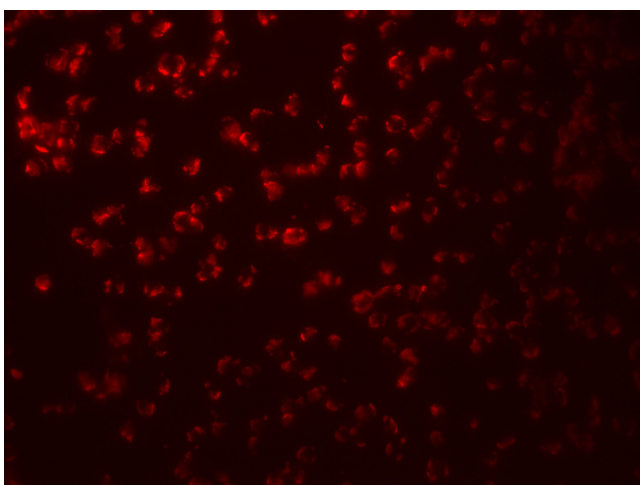
### Product images:



Western blot analysis of SAMHD1 in Daudi cell lysate with SAMHD1 antibody at 1  $\mu\text{g/ml}$  in (A) the absence and (B) the presence of blocking peptide.



Immunohistochemistry of SAMHD1 in human brain tissue with SAMHD1 antibody at 5  $\mu\text{g/ml}$ .



Immunofluorescence of SAMHD1 in Daudi cells with SAMHD1 antibody at 20ug/ml.