

Product datasheet for **TA355001**

SAMHD1 Rabbit Polyclonal Antibody

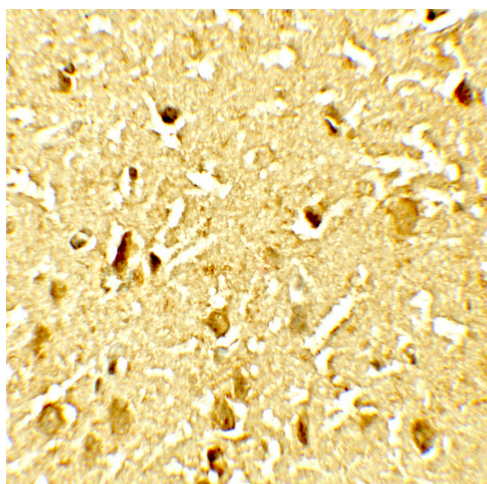
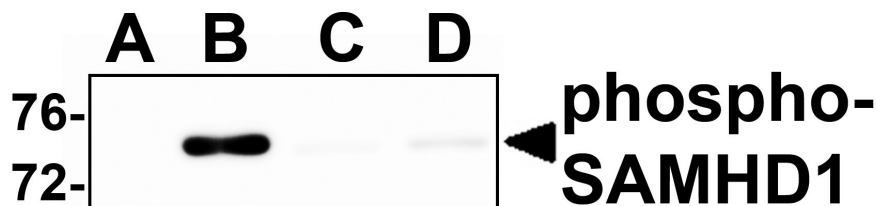
Product data:

Product Type:	Primary Antibodies
Applications:	IF, IHC, WB
Recommended Dilution:	WB: at 0.5-1µg/ml.IHC starting at 2.5µg/mL. IF start at 20µg/mL.
Reactivity:	Human, Mouse
Host:	Rabbit
Isotype:	IgG
Clonality:	Polyclonal
Immunogen:	Phospho-SAMHD1 antibody was raised against a phosphorylated 18 amino acid peptide near the carboxy terminus of human Phospho-SAMHD1 surrounding T592.
Formulation:	SAMHD1 (phospho Thr592) antibody is supplied in PBS containing 0.02% sodium azide.
Concentration:	1 mg/ml
Purification:	SAMHD1 (phospho Thr592) antibody is affinity chromatography purified via peptide column.
Conjugation:	Unconjugated
Storage:	Store at -20°C as received.
Stability:	Stable for 12 months from date of receipt.
Predicted Protein Size:	Predicted: 69 kDa
Gene Name:	SAM and HD domain containing deoxynucleoside triphosphate triphosphohydrolase 1
Database Link:	NP_056289 Entrez Gene 25939 Human Q9Y3Z3
Background:	The SAM domain and HD domain 1 (SAMHD1) protein is upregulated in response to viral infection and is thought to play a role in innate immunity (1). SAMHD1 blocks the infection of HIV-1 and SIVdeltaVpx before reverse transcription in macrophages and dendritic cells (2), and this restriction is regulated by phosphorylation of SAMHD1 (3). Mutations in this gene have been associated with Aicardi-Goutieres syndrome (1).
Synonyms:	AGS5; DCIP; HDDC1; Mg11; MOP-5; MOP5; SBBI88

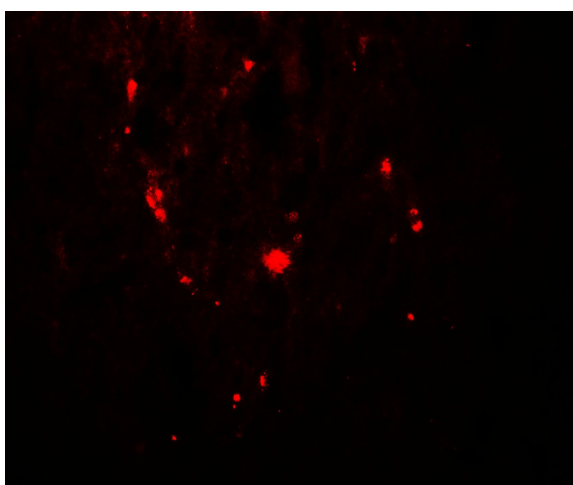

[View online »](#)

Note: SAMHD1 (phospho Thr592) antibody can be used for detection of SAMHD1 (phospho Thr592) by western blot at at 0.5 - 1 µg/ml. Antibody can also be used for immunohistochemistry starting at 2.5 µg/mL. For immunofluorescence start at 20 µg/mL.

Product images:



Immunohistochemistry of SAMHD1 (phospho Thr592) in human brain tissue with SAMHD1 (phospho Thr592) antibody at 2.5ug/ml.



Immunofluorescence of phosphoSAMHD1 in human brain tissue with phosphoSAMHD1 antibody at 20ug/mL.