

Product datasheet for **TA354999**

alpha Tubulin (TUBA1A) Rabbit Polyclonal Antibody

Product data:

Product Type:	Primary Antibodies
Applications:	IF, IHC, WB
Recommended Dilution:	WB: 1-2µg/ml.IHC starting at 2.5µg/mL. IF start at 20µg/mL.
Reactivity:	Human, Mouse, Rat
Host:	Rabbit
Isotype:	IgG
Clonality:	Polyclonal
Immunogen:	alpha-Tubulin antibody was raised against an 18 amino acid peptide near the carboxy terminus of human alpha-Tubulin
Formulation:	alpha-Tubulin antibody is supplied in PBS containing 0.02% sodium azide.
Concentration:	1 mg/ml
Purification:	alpha-Tubulin antibody is affinity chromatography purified via peptide column.
Conjugation:	Unconjugated
Storage:	Store at -20°C as received.
Stability:	Stable for 12 months from date of receipt.
Predicted Protein Size:	Predicted: 50 kDa; Observed: 54 kDa
Gene Name:	tubulin alpha 1a
Database Link:	NP_006000 Entrez Gene 22142 Mouse Entrez Gene 64158 Rat Entrez Gene 7846 Human Q71U36



[View online »](#)

Background:

alpha-Tubulin belongs to the tubulin superfamily, which is composed of six distinct families. Along with beta-tubulins, alpha-Tubulins are the major components of microtubules. These microtubules are involved in a wide variety of cellular activities ranging from mitosis and transport events to cell movement and the maintenance of cell shape. Alpha- and beta-tubulin dimers are assembled to 13 protofilaments that form a microtubule of 22-nm diameter (reviewed in 1). Tyrosine ligase adds a C-terminal tyrosine to monomeric alpha-Tubulin. Assembled microtubules can again be detyrosinated by a cytoskeleton-associated carboxypeptidase (2). Another post-translational modification of detyrosinated alpha-Tubulin is C-terminal polyglutamylation, which is characteristic of microtubules in neuronal cells and the mitotic spindle (3). Like GAPDH and β -Actin, this antibody makes an excellent loading control in immunoblots.

Synonyms:

B-ALPHA-1; FLJ25113; hum-a-tub1; hum-a-tub2; LIS3; TUBA3

Note:

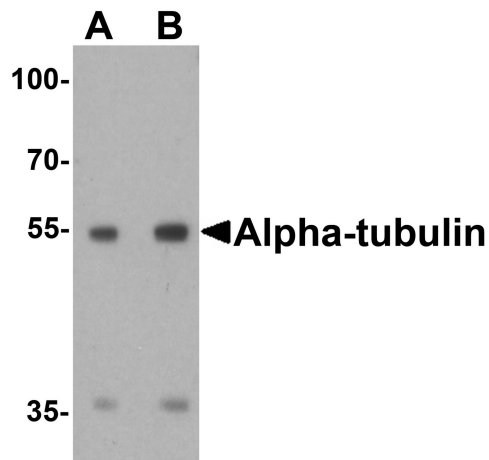
alpha-Tubulin antibody can be used for detection of alpha-Tubulin by Western blot at 1 - 2 μ g/ml. Antibody can also be used for Immunohistochemistry starting at 2.5 μ g/mL. For immunofluorescence start at 20 μ g/mL.

Protein Families:

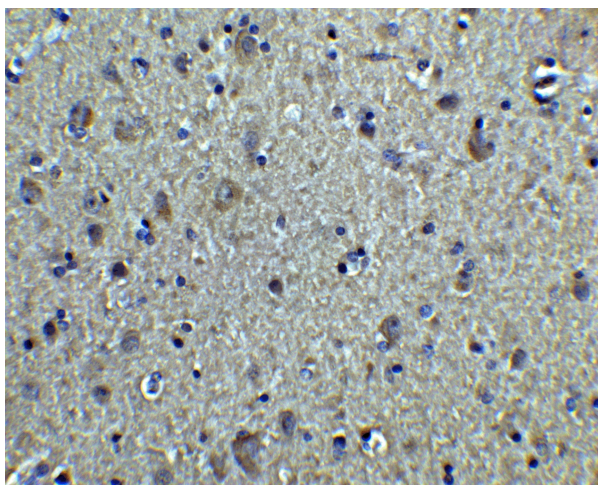
Druggable Genome

Protein Pathways:

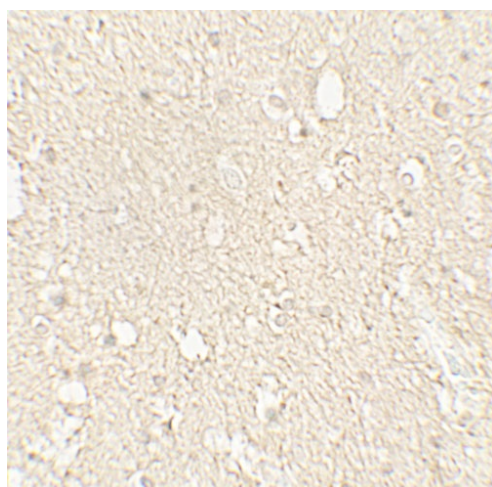
Gap junction, Pathogenic Escherichia coli infection

Product images:

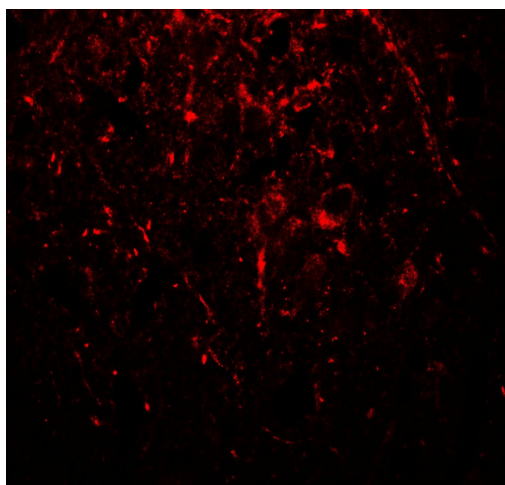
Western blot analysis of alpha-Tubulin in 293, Daudi, HeLa, HepG2, Jurkat, K562, NH3T3, Raji, Ramos, U937, Human brain, Mouse brain, Rat Brain, Rabbit Brain, Rabbit Spleen, Zebrafish, Mouse Liver and Chicken liver lysate at 1ug/mL.



Immunohistochemistry of alpha-Tubulin in human brain tissue with alpha-Tubulin antibody at 5ug/mL.



Immunohistochemistry of alpha-Tubulin in human brain tissue with alpha-Tubulin antibody at 2.5ug/mL.



Immunofluorescence of alpha-Tubulin in human brain tissue with alpha-Tubulin antibody at 20ug/mL.