

## Product datasheet for **TA354961**

### STAT6 Rabbit Polyclonal Antibody

#### Product data:

Product Type:	Primary Antibodies
Applications:	WB
Recommended Dilution:	WB 0.1-1 µg/ml ELISA 0.01-0.1 µg/ml IP 2-5 µg/ml IHC 2-10 µg/ml FC 5-10 µg/ml
Reactivity:	Human, Mouse
Host:	Rabbit
Isotype:	IgG
Clonality:	Polyclonal
Immunogen:	A synthetic peptide surrounding to the epitope with phosphorylation sites at Tyr 641 of STAT6 protein from human, mouse and rat origins.
Formulation:	This affinity purified antibody is supplied in sterile Tris-buffered saline (pH7.2) containing antibody stabilizer.
Purification:	The Rabbit IgG is purified by site-modified Epitope Affinity Purification.
Conjugation:	Unconjugated
Storage:	Store at -20°C as received.
Stability:	Stable for 12 months from date of receipt.
Predicted Protein Size:	95 kDa
Gene Name:	signal transducer and activator of transcription 6
Database Link:	<a href="#">NP_001171549</a> <a href="#">Entrez Gene 20852 Mouse</a> <a href="#">Entrez Gene 6778 Human</a> <a href="#">P42226</a>

**Background:** STAT proteins (Signal transducer and activator of transcription) belong to a family of cytoplasmic transcription factors that can be phosphorylated by a ligand binding to its cell surface receptor. Activation by phosphorylation of STAT6 at tyrosine 641 upon the IL-4 (possibly IL-13) ligand binding to its receptor induces dimerization, nuclear translocation and DNA binding. STAT6 is widely expressed in human tissues. It exhibits elevated expression in peripheral blood lymphocytes, colon, intestine, ovary, prostate, thymus, spleen, kidney, liver, lung, and placenta. STAT6 mediates the IL-4 signal and is essential for the proper development of adaptive immunity



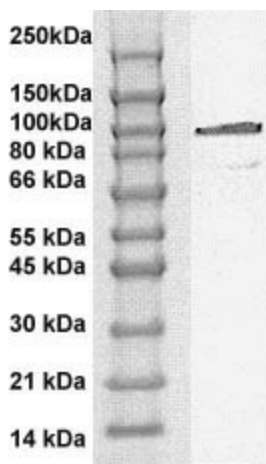
[View online »](#)

**Synonyms:** D12S1644; IL-4-STAT; STAT6B; STAT6C

**Protein Families:** Druggable Genome, ES Cell Differentiation/IPS, Stem cell relevant signaling - DSL/Notch pathway, Stem cell relevant signaling - JAK/STAT signaling pathway, Transcription Factors

**Protein Pathways:** Jak-STAT signaling pathway

**Product images:**



WB: The whole cell lysate derived from IL-4 treated HepG2 was immunoblotted by Rabbit anti-STAT6 (pY641) antibody at 1:500.