

## Product datasheet for **TA354959**

### STAT5A Rabbit Polyclonal Antibody

#### Product data:

Product Type:	Primary Antibodies
Applications:	WB
Recommended Dilution:	WB 0.1-1 µg/ml ELISA 0.01-0.1 µg/ml IP 2-5 µg/ml IHC 2-10 µg/ml FC 5-10 µg/ml
Reactivity:	Human, Mouse
Host:	Rabbit
Isotype:	IgG
Clonality:	Polyclonal
Immunogen:	A synthetic peptide surrounding to the epitope --KAVDG-Y-VKPQI- with phosphorylation sites at Tyrosine 694 of STAT5a protein from human, mouse, rat, chicken dog and bovine origins.
Formulation:	This affinity purified antibody is supplied in sterile Tris-buffered saline (pH7.2) containing antibody stabilizer.
Purification:	The Rabbit IgG is purified by site-modified Epitope Affinity Purification.
Conjugation:	Unconjugated
Storage:	Store at -20°C as received.
Stability:	Stable for 12 months from date of receipt.
Predicted Protein Size:	90 kDa
Gene Name:	signal transducer and activator of transcription 5A
Database Link:	<a href="#">NP_001275647</a> <a href="#">Entrez Gene 20850 Mouse</a> <a href="#">Entrez Gene 6776 Human</a> <a href="#">P42229</a>
Background:	STAT proteins (Signal transducer and activator of transcription) belong to a family of cytoplasmic transcription factors that can be phosphorylated by a ligand binding to its cell surface receptor. Activation of STAT5a induces dimerization, nuclear translocation and DNA binding. Stat5A is activated by IL-2, IL-7, IL-15, IL-3, GM-CSF, growth hormone, prolactin, erythropoietin and thrombopoietin; activation and dimerization of Stat5A requires phosphorylation of tyrosine 694.
Synonyms:	MGF; STAT5

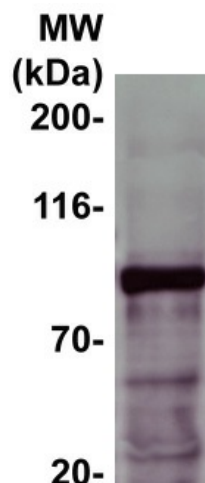


[View online »](#)

**Protein Families:** Druggable Genome, ES Cell Differentiation/IPS, Stem cell relevant signaling - DSL/Notch pathway, Stem cell relevant signaling - JAK/STAT signaling pathway, Transcription Factors

**Protein Pathways:** Acute myeloid leukemia, Chronic myeloid leukemia, ErbB signaling pathway, Jak-STAT signaling pathway, Pathways in cancer

**Product images:**



WB: The whole tissue lysate derived from 30 min posttreatment of 200 uM GH mouse liver was immunoblotted by Rabbit anti-STAT5a (pY694) antibody at 1:500. An major immunoreactive band around ~90kDa was observed.