

Product datasheet for **TA354958**

STAT5A Rabbit Polyclonal Antibody

Product data:

| | |
|-------------------------|--|
| Product Type: | Primary Antibodies |
| Applications: | WB |
| Recommended Dilution: | WB 0.1-1 µg/ml ELISA 0.01-0.1 µg/ml IP 2-5 µg/ml IHC 2-10 µg/ml FC 5-10 µg/ml |
| Reactivity: | Human, Mouse |
| Host: | Rabbit |
| Isotype: | IgG |
| Clonality: | Polyclonal |
| Immunogen: | A synthetic peptide surrounding to the epitope -LDSRL-S-PPAGLF-with phosphorylation sites at Serine 780 of STAT5a protein from human, mouse, rat, chicken dog and bovine origins. |
| Formulation: | This affinity purified antibody is supplied in sterile Tris-buffered saline (pH7.2) containing antibody stabilizer. |
| Purification: | The Rabbit IgG is purified by site-modified Epitope Affinity Purification. |
| Conjugation: | Unconjugated |
| Storage: | Store at -20°C as received. |
| Stability: | Stable for 12 months from date of receipt. |
| Predicted Protein Size: | 90 kDa |
| Gene Name: | signal transducer and activator of transcription 5A |
| Database Link: | NP_001275647 Entrez Gene 20850 Mouse Entrez Gene 6776 Human P42229 |
| Background: | STAT proteins (Signal transducer and activator of transcription) belong to a family of cytoplasmic transcription factors that can be phosphorylated by a ligand binding to its cell surface receptor. Activation of STAT5a induces dimerization, nuclear translocation and DNA binding. Stat5A is activated by IL-2, IL-7, IL-15, IL-3, GM-CSF, growth hormone, prolactin, erythropoietin and thrombopoietin; activation and dimerization of Stat5A requires phosphorylation of STATs. |
| Synonyms: | MGF; STAT5 |

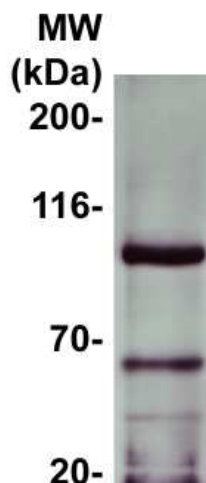


[View online »](#)

Protein Families: Druggable Genome, ES Cell Differentiation/IPS, Stem cell relevant signaling - DSL/Notch pathway, Stem cell relevant signaling - JAK/STAT signaling pathway, Transcription Factors

Protein Pathways: Acute myeloid leukemia, Chronic myeloid leukemia, ErbB signaling pathway, Jak-STAT signaling pathway, Pathways in cancer

Product images:



WB: The whole tissue lysate derived from 30 min posttreatment of 200 uM GH mouse liver was immunoblotted by Rabbit anti-STAT5a (pS780) antibody at 1:500. An major immunoreactive band around ~90kDa was observed.