

Product datasheet for **TA354955**

STAT3 Rabbit Polyclonal Antibody

Product data:

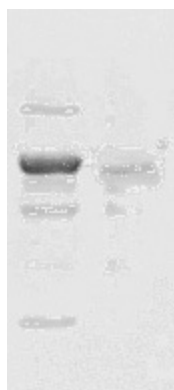
Product Type:	Primary Antibodies
Applications:	Dot, WB
Recommended Dilution:	WB 0.1-1 µg/ml ELISA N/A IP 2-5 µg/ml IHC 2-10 µg/ml FC Not tested
Reactivity:	Human, Mouse, Rat
Host:	Rabbit
Isotype:	IgG
Clonality:	Polyclonal
Immunogen:	A synthetic peptide surrounding to the epitope -PMSPR-- with phosphorylation sites at Ser727 of STAT3 protein from human, mouse, rat, chicken dog and bovine origins.
Formulation:	This affinity purified antibody is supplied in sterile Tris-buffered saline (pH7.2) containing antibody stabilizer.
Purification:	The Rabbit IgG is purified by site-modified Epitope Affinity Purification.
Conjugation:	Unconjugated
Storage:	Store at -20°C as received.
Stability:	Stable for 12 months from date of receipt.
Predicted Protein Size:	94 kDa
Gene Name:	signal transducer and activator of transcription 3
Database Link:	NP_003141 Entrez Gene 20848 Mouse Entrez Gene 25125 Rat Entrez Gene 6774 Human P40763
Background:	STAT proteins (Signal transducer and activator of transcription) belong to a family of cytoplasmic transcription factors that can be phosphorylated by a ligand binding to its cell surface receptor. The phosphorylation of STAT3 induces STAT dimerization, nuclear translocation and DNA binding. Stat3 is constitutively activated in a number of human tumors. Stat3-activated transcription seems to be regulated by serine phosphorylation at Ser727.
Synonyms:	ADMIO; APRF; HIES
Protein Families:	Druggable Genome, Transcription Factors



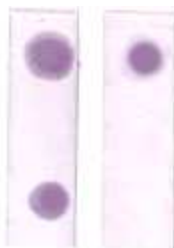
[View online »](#)

Protein Pathways: Acute myeloid leukemia, Adipocytokine signaling pathway, Chemokine signaling pathway, Jak-STAT signaling pathway, Pancreatic cancer, Pathways in cancer

Product images:



WB: The whole cell lysate derived from A431 with EGF stimulated (Lane 1) or without EGF stimulated (Lane 2) were immunoblotted by Rabbit anti-STAT3 (pS727) antibody at 1:500.



DB: 1 ug peptide was blot onto NC membrane A: STAT3 (pS727) (Phosphospecific) B: STAT3 (Paired S727) (Non phosphospecific) were blotted at a 1:2000 dilution by: 1: Rabbit anti-STAT3 (Paired S727), 2: Rabbit anti-STAT3 (Phospho specific),.