

Product datasheet for **TA354933**

CCZ1 Rabbit Polyclonal Antibody

Product data:

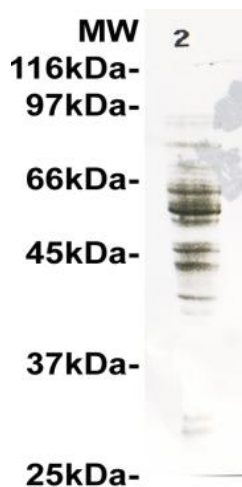
Product Type:	Primary Antibodies
Applications:	WB
Recommended Dilution:	WB 0.1-1 µg/ml ELISA 0.01-0.1 µg/ml IP 2-5 µg/ml IHC 2-10 µg/ml FC 5-10 µg/ml
Reactivity:	Human, Mouse
Host:	Rabbit
Isotype:	IgG
Clonality:	Polyclonal
Immunogen:	A synthetic peptide derived from a portion of the intra domain 350-395aa of human CCZ1 protein. This sequence is identical to human, mouse, rat, bovine and chicken.
Formulation:	This affinity purified antibody is supplied in sterile Phosphate buffered saline (pH7.2) containing antibody stabilizer.
Purification:	The Rabbit IgG is purified by Epitope Affinity Purification
Conjugation:	Unconjugated
Storage:	Store at -20°C as received.
Stability:	Stable for 12 months from date of receipt.
Predicted Protein Size:	55 kDa
Gene Name:	CCZ1 homolog, vacuolar protein trafficking and biogenesis associated
Database Link:	NP_056437 Entrez Gene 231874 Mouse Entrez Gene 51622 Human P86790
Background:	SAND-1 (Mon1a (490aa) and Mon1b (547aa)) and CCZ-1 (Ccz1) are new factors for the apoptotic cells removal. Impaired apoptotic cell clearance (due to defective recognition, internalization or degradation) results in autoimmune disease. Mon1a and Mon1b, are similarly required for phagosome maturation. Mon1a and Mon1b are required for phagosome maturation. Mon1a and its partner CCZ-1 form a complex (but not either protein alone) could bind small GTPase Rab7, thus influence Rab7 activation; Mon1a, Mon1b and CCZ-1 are critical and evolutionarily conserved components regulating the processing of ingested apoptotic cell corpses.



[View online »](#)

Synonyms: C7orf28A; CCZ1A; CGI-43; H_DJ1163J12.2

Product images:



WB: The whole cell lysate derived from HeLa was immunoblotted by Rabbit anti-Mon1a at 1:500, a predominant immunoreactive band around ~55 kDa is observed.