

Product datasheet for **TA354928**

Cytokeratin 18 (KRT18) Rabbit Polyclonal Antibody

Product data:

| | |
|-------------------------|---|
| Product Type: | Primary Antibodies |
| Applications: | IHC, WB |
| Recommended Dilution: | WB 0.1-1 µg/ml ELISA 0.01-0.1 µg/ml IP 2-5 µg/ml IHC 2-10 µg/ml FC 5-10 µg/ml |
| Reactivity: | Human |
| Host: | Rabbit |
| Isotype: | IgG |
| Clonality: | Polyclonal |
| Immunogen: | A synthetic peptide surrounding to the epitope -SAASVYA- with a phosphorylation site at Serine 33 of Cytokeratin 18 protein from human origin. It is identical among human, mouse, rat, etc.. |
| Formulation: | This affinity purified antibody is supplied in sterile Phosphate-buffered saline (pH7.2) containing antibody stabilizer. |
| Purification: | The Rabbit IgG is purified by site-modified Epitope Affinity Purification. |
| Conjugation: | Unconjugated |
| Storage: | Store at -20°C as received. |
| Stability: | Stable for 12 months from date of receipt. |
| Predicted Protein Size: | ~48 kDa |
| Gene Name: | keratin 18 |
| Database Link: | NP_000215 Entrez Gene 3875 Human P05783 |



[View online »](#)

Background:

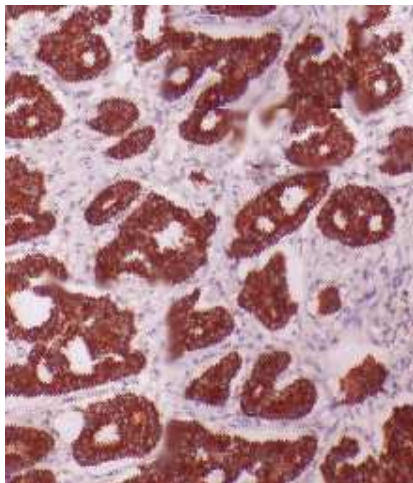
Keratin polypeptides 8 (basic keratin) and 18 (acidic keratin) exist in combination as K8/K18 which are the cytoskeletal intermediate filament proteins of hepatocytes while K8/K18/K19 are the keratins of hepatobiliary ductal cells. Hepatocyte K8/K18 are highly abundant and behave as stress proteins with injury-inducible expression. K8 and K18 are cytoprotective stress proteins that play a central role in guarding hepatocytes from apoptosis. Hepatocellular carcinoma have been reportedly defined by the use of antibodies that recognize only cytokeratins 8 and 18. K18 Ser33 as an interphase phosphorylation site, which increases its phosphorylation during mitosis in cultured cells and regenerating liver, and as an *in vitro* cdc2 kinase phosphorylation site. Phosphorylation of Ser33 and Ser52 are involved in keratin subcellular distribution.

Synonyms:

CYK18; K18

Protein Pathways:Pathogenic *Escherichia coli* infection**Product images:**

WB: The whole cell lysate derived from A431 was immunoblotted by Rabbit anti-CK18 (pSer33) antibody at 1:500, an immunoreactive band around ~48kDa is observed.



IHC: Human breast cancer stained with Anti-Keratin 18 (pS33) antibody, at 1:200 for 10 min at RT. Staining of formalin-fixed tissue requires boiling tissue sections in 10 mM Citrate Buffer, pH 6.0 for 10 min followed by cooling at RT for 20 min.