

## Product datasheet for **TA354907**

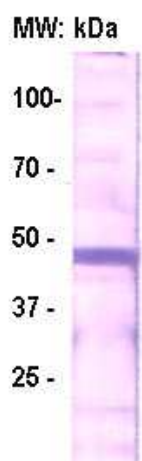
### E7 protein Rabbit Polyclonal Antibody

#### Product data:

Product Type:	Primary Antibodies
Applications:	WB
Recommended Dilution:	WB 0.1-1 µg/ml ELISA 0.01-0.1 µg/ml IP 2-5 µg/ml IHC 2-10 µg/ml FC 5-10 µg/ml
Reactivity:	Human, Mouse, Rat
Host:	Rabbit
Isotype:	IgG
Clonality:	Polyclonal
Immunogen:	A synthetic peptide corresponding to the internal sequence of human papillomavirus type 16.
Formulation:	This affinity purified antibody is supplied in sterile Phosphate buffered saline (pH7.2) containing antibody stabilizer.
Purification:	The Rabbit IgG is purified by Epitope Affinity Purification
Conjugation:	Unconjugated
Storage:	Store at -20°C as received.
Stability:	Stable for 12 months from date of receipt.
Predicted Protein Size:	~N/A
Database Link:	<a href="#">Entrez Gene 8223418</a>
Background:	The strain of Human papilloma virus 16 (HPV16 or E7 protein) is directly linked to cervical cancer and can be diagnosed with a colposcopy and biopsy. Human papilloma virus is one of the most common causes of sexually transmitted infection in the world. E7 protein has transforming and trans-activating activities that are known to disrupt the function of host retinoblastoma protein (Rb1). E6 is a transcriptional trans-activator with transforming activities targeting p53 tumor suppressor. HPV16, in comparison to HPV types 6 and 11, is more often associated with malignant genital cancers in humans. This antibody was raised in rabbit against protein E7 of human papillomavirus type 16 (HPV16) which is mainly used for research on sexually-transmitted diseases and gynecology tumor.



[View online »](#)

**Product images:**

WB: The recombinant protein E7-GST was separated in 10% SDS-PAGE, transferred onto Nitrocellulose membrane, and immunoblotted by Rabbit antiHPV16/E7 (IN) at 1:500. An immune-reactive band is observed.