

Product datasheet for **TA354906**

TGF beta Receptor I (TGFBR1) Rabbit Polyclonal Antibody

Product data:

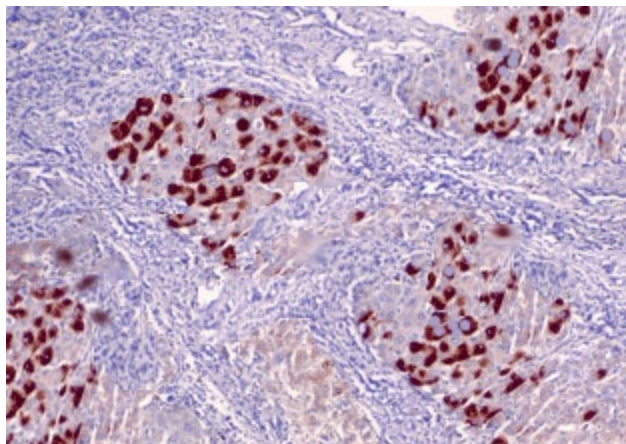
Product Type:	Primary Antibodies
Applications:	IHC, WB
Recommended Dilution:	WB 0.1-1 µg/ml ELISA 0.01-0.1 µg/ml IP 2-5 µg/ml IHC 2-10 µg/ml FC 5-10 µg/ml
Reactivity:	Human, Mouse, Rat
Host:	Rabbit
Isotype:	IgG
Clonality:	Polyclonal
Immunogen:	A synthetic peptide corresponding to the internal sequence of human TGFbR1 surrounding the Serine 165
Formulation:	This affinity purified antibody is supplied in sterile Tris-buffered saline (pH7.2) containing antibody stabilizer.
Purification:	The Rabbit IgG is purified by site-modified Epitope Affinity Purification.
Conjugation:	Unconjugated
Storage:	Store at -20°C as received.
Stability:	Stable for 12 months from date of receipt.
Predicted Protein Size:	~55 kDa
Gene Name:	transforming growth factor beta receptor 1
Database Link:	NP_001124388 Entrez Gene 21812 Mouse Entrez Gene 29591 Rat Entrez Gene 7046 Human P36897
Synonyms:	AAT5; ACVRLK4; ALK-5; ALK5; ESS1; LDS1; LDS1A; LDS2A; MSSE; SKR4; tbetaR-I; TGFR-1
Protein Families:	Druggable Genome, Protein Kinase, Transmembrane
Protein Pathways:	Adherens junction, Chronic myeloid leukemia, Colorectal cancer, Cytokine-cytokine receptor interaction, Endocytosis, MAPK signaling pathway, Pancreatic cancer, Pathways in cancer, TGF-beta signaling pathway



[View online »](#)

Product images:

WB: The cell lysate derived from TGF beta peptide (10 ng/ml for 30 minutes) stimulated MCF-7 cell lysate was immunoprobed by Rabbit anti-TGF beta R1 at 1:500. An immunoreactive band is observed around ~



IHC: Formalin-fixed, paraffinembedded human breast carcinoma tissue stained with Rabbit anti-TGFBRI (pSer165) antibody at 1:50 for 10 min at RT. Staining of formalin-fixed tissue requires boiling tissue sections in 10 mM Citrate Buffer, pH 6.0 for 10 min followed by cooling at RT for 20 min.