

Product datasheet for **TA354905**

TGF beta Receptor I (TGFB β R1) Rabbit Polyclonal Antibody

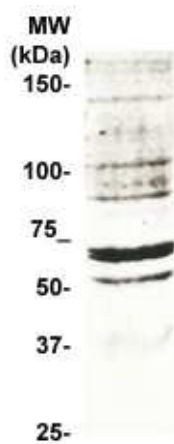
Product data:

Product Type:	Primary Antibodies
Applications:	WB
Recommended Dilution:	WB 0.1-1 μ g/ml ELISA 0.01-0.1 μ g/ml IP 2-5 μ g/ml IHC 2-10 μ g/ml FC 5-10 μ g/ml
Reactivity:	Human, Mouse, Rat
Host:	Rabbit
Isotype:	IgG
Clonality:	Polyclonal
Formulation:	This affinity purified antibody is supplied in sterile Tris-buffered saline (pH7.2) containing antibody stabilizer.
Purification:	The Rabbit IgG is purified by site-modified Epitope Affinity Purification.
Conjugation:	Unconjugated
Storage:	Store at -20°C as received.
Stability:	Stable for 12 months from date of receipt.
Predicted Protein Size:	~55 kDa
Gene Name:	transforming growth factor beta receptor 1
Database Link:	NP_001124388 Entrez Gene 21812 MouseEntrez Gene 29591 RatEntrez Gene 7046 Human P36897
Synonyms:	AAT5; ACVRLK4; ALK-5; ALK5; ESS1; LDS1; LDS1A; LDS2A; MSSE; SKR4; tbetaR-I; TGFR-1
Protein Families:	Druggable Genome, Protein Kinase, Transmembrane
Protein Pathways:	Adherens junction, Chronic myeloid leukemia, Colorectal cancer, Cytokine-cytokine receptor interaction, Endocytosis, MAPK signaling pathway, Pancreatic cancer, Pathways in cancer, TGF-beta signaling pathway



[View online »](#)

Product images:



WB: The cell lysate derived from TGF beta peptide (10 ng/ml for 30 minutes) stimulated MCF-7 cell lysate was immunoprobed by Rabbit anti-TGF beta R1 at 1:1000. A major immunoreactive band is observed around ~