

## Product datasheet for **TA354903**

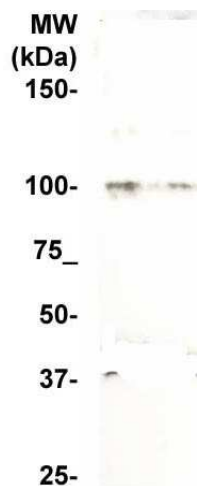
### KIF6 Rabbit Polyclonal Antibody

#### Product data:

Product Type:	Primary Antibodies
Applications:	WB
Recommended Dilution:	WB 0.1-1 µg/ml ELISA 0.01-0.1 µg/ml IP 2-5 µg/ml IHC 2-10 µg/ml FC 5-10 µg/ml
Reactivity:	Human
Host:	Rabbit
Isotype:	IgG
Clonality:	Polyclonal
Immunogen:	A synthetic peptide corresponding to internal sequence of human KIF6.
Formulation:	This affinity purified antibody is supplied in sterile Phosphate buffered saline (pH7.2) containing antibody stabilizer.
Purification:	The Rabbit IgG is purified by Epitope Affinity Purification
Conjugation:	Unconjugated
Storage:	Store at -20°C as received.
Stability:	Stable for 12 months from date of receipt.
Predicted Protein Size:	94 kDa
Gene Name:	kinesin family member 6
Database Link:	<a href="#">NP_001275949</a> <a href="#">Entrez Gene 221458 Human</a> <a href="#">Q6ZMV9</a>
Background:	KIF6 belongs to the kinesin-like protein family. There are four named isoforms. The KIF6 719Arg polymorphism in the KIF6 gene might be associated with an increased risk of coronary artery disease, thus, the KIF6, together with Apolipoprotein E, lipoprotein (a) could be a genetic marker in clinic diagnosis.
Synonyms:	C6orf102; dj137F1.4; dj188D3.1; dj1043E3.1
Protein Families:	Druggable Genome



[View online »](#)

**Product images:**

WB: The mouse heart tissue lysate was separated in 10% SDS-PAGE, transferred onto Nitrocellulose membrane, and immunoblotted by Rabbit anti-KIF6 at 1:500. An immune-reactive band is observed.