

Product datasheet for **TA354875**

NOTCH1 Rabbit Polyclonal Antibody

Product data:

Product Type:	Primary Antibodies
Applications:	IHC
Recommended Dilution:	WB 0.1-1 µg/ml ELISA 0.01-0.1 µg/ml IP 2-5 µg/ml IHC 2-10 µg/ml FC 5-10 µg/ml
Reactivity:	Human
Host:	Rabbit
Isotype:	IgG
Clonality:	Polyclonal
Immunogen:	A synthetic peptide derived from C-terminus of human Notch 1.
Formulation:	This affinity purified antibody is supplied in sterile Phosphate buffered saline (pH7.2) containing antibody stabilizer.
Purification:	The Rabbit IgG is purified by Epitope Affinity Purification
Conjugation:	Unconjugated
Storage:	Store at -20°C as received.
Stability:	Stable for 12 months from date of receipt.
Predicted Protein Size:	275 kDa
Gene Name:	notch 1
Database Link:	NP_060087 Entrez Gene 4851 Human P46531
Background:	The 280-330kDa Notch protein is a single transmembrane receptor which is expressed on a range of cells including hematopoietic cells in mouse fetal liver, adult thymus and bone marrow. These proteins have been found to be overexpressed or rearranged in human tumors. It functions as a receptor for membrane-bound ligands Jagged1, Jagged-2 and Delta1 to regulate cell-fate determination. Following ligand binding, Notch 1 is cleaved in the transmembrane domain, releasing the Notch intracellular domain (NICD) to translocate to the nucleus, where it plays a role in the modulation of gene expression. Notch1 plays a role in embryonic development and tissue homeostasis in the adult. Recent work has suggested a further role for this receptor in the regulation of lymphopoiesis and myelopoiesis.



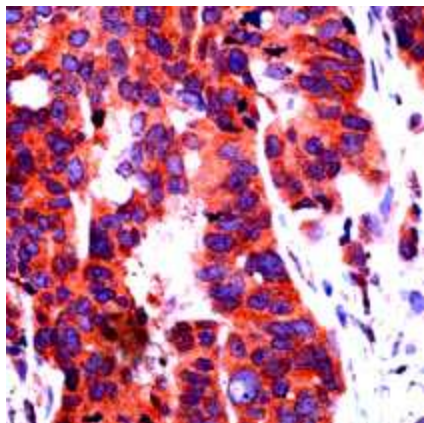
[View online »](#)

Synonyms: AOS5; AOVD1; hN1; TAN1

Protein Families: Adult stem cells, Cancer stem cells, Druggable Genome, ES Cell Differentiation/IPS, Stem cell relevant signaling - DSL/Notch pathway

Protein Pathways: Dorso-ventral axis formation, Notch signaling pathway, Prion diseases

Product images:



IHC: The human ovary carcinoma stained with Rabbit anti-Notch 1 antibody at 1:200. (Note: formalin-fixed, paraffinembedded sections need 15 minutes heat-induced epitope retrieval in 10 mM citrate buffer, pH 6.0, and 30 minutes incubation at room temperature with the primary antibody.)