

## Product datasheet for **TA354874**

### PAX8 Rabbit Polyclonal Antibody

#### Product data:

Product Type:	Primary Antibodies
Applications:	IHC, WB
Recommended Dilution:	WB 0.1-1 µg/ml ELISA 0.01-0.1 µg/ml IP 2-5 µg/ml IHC 2-10 µg/ml FC 5-10 µg/ml
Reactivity:	Human, Mouse, Rat
Host:	Rabbit
Isotype:	IgG
Clonality:	Polyclonal
Immunogen:	A synthetic peptide derived from internal sequence of human PAX8. It is identical to human, rat, and mouse
Formulation:	This affinity purified antibody is supplied in sterile Phosphate buffered saline (pH7.2) containing antibody stabilizer.
Purification:	The Rabbit IgG is purified by Epitope Affinity Purification
Conjugation:	Unconjugated
Storage:	Store at -20°C as received.
Stability:	Stable for 12 months from date of receipt.
Predicted Protein Size:	48 kDa
Gene Name:	paired box 8
Database Link:	<a href="#">NP_003457</a> <a href="#">Entrez Gene 18510 Mouse</a> <a href="#">Entrez Gene 81819 Rat</a> <a href="#">Entrez Gene 7849 Human</a> <a href="#">Q06710</a>
Background:	PAX8 is a member of the paired box (PAX) family of transcription factors. Members of this gene family typically encode proteins that contain a paired box domain, an octapeptide and a paired-type homeodomain. This nuclear protein is involved in thyroid follicular cell development and expression of thyroid-specific genes. Mutations in this gene have been associated with thyroid dysgenesis, thyroid follicular carcinomas and atypical follicular thyroid adenomas. Alternatively spliced transcript variants encoding different isoforms have been described.
Synonyms:	OTTHUMP00000158659; OTTHUMP00000158660; paired box 8; paired domain gene 8



[View online »](#)

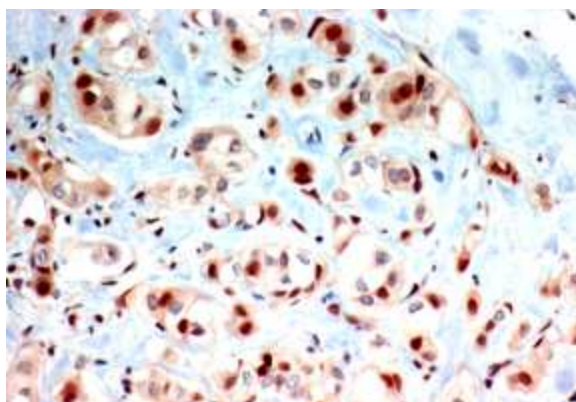
Protein Families: Druggable Genome, Transcription Factors

Protein Pathways: Pathways in cancer, Thyroid cancer

### Product images:



WB: The cell lysate derived from Jurkat was immunoblotted by Rabbit anti-PAX8 antibody at 1:500. An immunoreactive band is observed at 48 kDa. This band is depleted by immunizing peptide.



IHC: The human breast carcinoma stained with Rabbit anti-PAX8 antibody at 1:250. (Note: formalin-fixed, paraffin-embedded sections need 15 minutes heat-induced epitope retrieval in 10 mM citrate buffer, pH 6.0, and 30 minutes incubation at room temperature with the primary antibody.)